

# January Agenda

## Regular Meeting of Trustees

The regular meeting of the Board of Trustees of School District #35 has been scheduled for **Monday, January 16, 2017** at **6:00pm** at the **Gallatin Gateway School Board Room**. (All policies can be found at [www.gallatingatewayschool.com](http://www.gallatingatewayschool.com).)

### Call to Order

### Pledge of Allegiance

**Board Vision Statement:** “Gallatin Gateway School provides a premiere educational program for students.”

**Presiding Trustee’s explanation of procedures** (GGS Policy #1070)

**Public Comment- Non Agenda Items-** Sign in sheet- (GGS Policy #1070)

**GGS Student Presentation:** Mr. Coon- Robotics Presentation

### Guest

Bob Franzen, CTA- Review Analysis with the Board

### Consent Agenda

**Minutes:** December 12, 2016- regular meeting; December 19, 2016- special meeting; January 5, 2017- special meeting; and January 9, 2017-special meeting (GGS Policy #1065 & #1070); **Finance:** Warrants (GGS Policy #7000); Operational Budget by Object Code (GGS Policy #7000); Cash Reconciliation as of December 31, 2016; Extra-Curricular Expenditure and Reconciliation Report (GGS Policy #7025) **Hire:** Classified/Certified Substitutes

### Old Business

Bus Replacement – Trade-In  
Discussion: Safety Plan Revisions

### Superintendent’s Report

### New Business

Discussion Items:

2017 Legislative Overview  
Public Meeting- Bozeman High School Expansion- February 22, 2017 at 7pm

Action Items:

Request for Participation in Athletics by a Non-enrolled Student  
Review and Respond to Gravel Hollow Minor Subdivision Proposal  
Review and Adopt Revisions to District Safety Plan (GGS Policy #7060 & 20-1-401, MCA)  
Set Date for Business Manager Evaluation

Next Meeting:

Special Meeting- Thursday, January 19, 2017 from 1:00-5:00pm- *Policy Review Session*  
Regular Meeting - Monday, February 20, 2017 @ 6pm

### Adjournment

*“The Gallatin Gateway School community empowers our students to take responsibility for their learning so they may achieve their individual potentials as lifelong learners and productive citizens.”*

**MINUTES  
REGULAR MEETING  
BOARD OF TRUSTEES, GALLATIN GATEWAY SCHOOL DISTRICT #35**

---

**Call to Order**

The Board of Trustees of the Gallatin Gateway School District #35 met at 6:00pm on Monday, January 16, 2017 in the Gallatin Gateway School Board Room. Board Chair Donna Shockley presided and called the meeting to order at 6:03pm.

**Trustees Present**

Donna Shockley, Board Chair; Lyn Morton, Board Vice-Chair; Julie Fleury, Christie Francis, and Aaron Schwieterman

**Trustees Absent**

None

**Staff Present**

Travis Anderson, Superintendent; Carrie Fisher, District Clerk; and Mike Coon, Teacher

**Others Present**

Dick Shockley, Brad Parsch, Cassandra Elwell, Emmett Allen, Cole Dyk, and Bob Franzen, CTA

**Pledge of Allegiance**

The meeting attendees recited the *Pledge of Allegiance*.

**Presiding Trustee's Explanation of Procedures**

Board Chair Donna Shockley explained the public comment process to be followed for addressing the Board in accordance with Gallatin Gateway School policy. She noted: 1) that prior to a vote the public may comment on agenda items; 2) there will be time for public comment on non-agenda items; and 3) public comment periods are not intended to be a question and answer session.

**Public Comment on Non- Agenda Items**

Dick Shockley provided the Board with information from the Facility Advisory Committee. He gave the board and community present a handout which provided recommendation for facilities planning priorities from the Facility Advisory Committee based on their analysis of the current facility conditions. Short-term recommendation included Gym Heater Replacement, Gym Bleacher Replacement, and LED Lighting Upgrade. Long-term recommendations included Heat Recovery Ventilation Upgrade, Temp Controls Upgrade, and Boiler System Upgrade.

**GGs Student Presentation:** Mr. Coon introduced two students, Cole Dyk and Emmett Allen, to the School Board. The students provided the Board with information regarding the technology elective class and did a robotic demonstration for the Board.

**Guest:**

Bob Franzen from CTA reviewed and discussed the Building Assessment dated November 2016 with the Board. The Board and community in attendance provided Mr. Franzen with inquiries and clarifying questions regarding the report.

**Consent Agenda**

Motion: Vice Chair Lyn Morton to approve minutes from December 12, 2016- regular meeting; December 19, 2016- special meeting; January 5, 2017- special meeting; and January 9,2017-special meeting; approve

claim warrants- #35152-36167; electronic payments- 99992; payroll warrants #75168-35171 and direct deposits -89656-89682 (VOID: 35168-35171); Expenditure vs Budget Report as of January 13, 2017; Approve the cash reconciliation report as of December 31, 2016 and inter fund transfers for January 13, 2017; approve Extra Curricular Recap & Reconciliation as of December 31, 2016 with a balance of \$14, 479.09; to hire the following certified/classified substitutes: Bus Driver: Maxine Daniel and Gary Jones; Kitchen/Food Service: Stacy Webb and Connie Evenson; Teachers/Aides/Other: Shelly Berezay, April Bettilyon, Zoe Brown, Cynthia Corliss, Megan Costle, Kate Cottingham, Sonja Davis, Priscilla Dolan, Jonathan Gans, Jennifer Gilbert, Lauren Hausauer, Wendy Hourigan, Sunny Jaye, Helen Ketcher, Spencer Kirkemo, Patrick Lupton, Heather Maxcy, Libby Michaud, Darcy Nordhagen, Brad Parsch, Teresa Ann Quatraro, Ashley Senenfelder, Megan Stark, Barry Sulam, and Leann Swain pending adequate fingerprint/background check and TB test results..

Seconded: Trustee Aaron Schwieterman

Public Comment: None

For: Fleury, Francis Morton, Schwieterman, Shockley

Opposed: None

Motion passed unanimously

### **Old Business**

#### Bus Replacement- Trade-In

The Board reviewed and discussed information regarding the bus replacement.

Motion: Trustee Christie Francis to trade-in the 2011 International Bus with VIN

#4DRBUAAP7BB259084 to Hartley's Bus Sales, Inc for \$28, 500 that will be applied to the final purchase price of a new Bluebird diesel bus.

Seconded: Trustee Aaron Schwieterman

Public Comment: None

For: Fleury, Francis, Morton, Schwieterman, Shockley

Opposed: None

Motion passed unanimously

#### Discussion: Safety Plan Revision

The Board reviewed and discussed the District Safety Plan. Superintendent Anderson recommended the plan revisions include positions of individuals responsible and then add an addendum each year with the specific names of people in those positions and appropriate contact information. He explained that many of the individuals currently listed in the plan have changed and are likely to change in the future. The Board agreed and will review Superintendent Anderson's recommended revisions at a future meeting.

### **SUPERINTENDENT**

Superintendent Anderson provided the Board with information on the following: 1) Enrollment Summary- 142; 2) School Board Training Opportunities; 3) Gym Heater Repairs & Update; 4) Mentoring Program; 5) Corrective Math and Connecting Math Concepts Materials Order; 6) Winter Parent Meeting- January 30; 7) Missoula Children's Theater- Feb 26-March 4; 8) Community Supper- Feb 22; 9) Bozeman High School Expansion Community Meeting- Feb 22; 10) Holiday Donation; 11) Ski Day- Feb 6; and 12) Gallatin/Madison Special Education Cooperative Meeting Update.

### **NEW BUSINESS**

#### Discussion: 2017 Legislative Overview

Superintendent Travis Anderson provided the Board information about the current bills in legislation that may have an impact on the District.

#### Discussion: Public Meeting: Bozeman High School Expansion- February 22, 2017 @ 7pm

Rob Watson, Superintendent for the Bozeman School District will be hosting a meeting at the Gallatin Gateway Community Center on Wednesday, February 22, 2017 at 7pm to provide information about the upcoming expansion and remodel of Bozeman High School.

Request for Participation in Athletics by a Non-enrolled Student

Motion: Vice Chair Lyn Morton to allow Uriah Black to participate in the Gallatin Gateway School wrestling program during the 2016-2017 school year.

Seconded: Trustee Christie Francis

Public Comment: Dick Shockley

For: Fleury, Francis, Morton, Schwieterman, Shockley

Opposed: None

Motion passed unanimously

Review and Respond to Gravel Hollow Minor Subdivision Proposal

The Board reviewed and discussed the proposal from Meridian Land Surveying, Inc regarding a minor subdivision proposal. The proposed subdivision is located on the East side of Highway 191 at the current location of Gravel Hollow. The Board asked Superintendent Anderson to provide a response to the proposal. Once the proposal is developed, the Superintendent Anderson will forward a copy to the Board for their records.

Public Comment: Cassandra Elwell, Dick Shockley

For: Fleury, Francis, Morton, Schwieterman, Shockley

Opposed: None

Motion passed unanimously

Review and Adopt Revisions to District Safety Plan

Board Chair Donna Shockley tabled this agenda item until February 2017 regular meeting.

Set Date for Business Manager Evaluation

The Board will meet on March 10, 2017 at 1pm to conduct the Business Manager Evaluation.

Next meetings

There will be a special meeting on Thursday, January 19, 2017 to review district policy with Joe Brott from MTSBA and the next regular meeting will be Monday, February 20, 2017.

**Adjournment**

Board Chair Donna Shockley adjourned the meeting at 8:36pm.

  
Donna Shockley, Board Chair

  
Carrie Fisher, District Clerk



**GALLATIN GATEWAY SCHOOL  
PO BOX 265, GALLATIN GATEWAY, MT 59730**

Gallatin Gateway School Policy #1070- The agenda must also include a "public comment" item in order to allow members of the general public to comment on any public matter under the jurisdiction of the district that is not specifically listed on the agenda, except that no member of the public will be allowed to comment on contested cases, other adjudicative proceedings, or personnel matters. The Board Chairman may place reasonable time limits on any "public comment" item in order to maintain and ensure effective and efficient operations of the Board. The District shall not take any action on any matter discussed, unless the matter is specifically noticed on the agenda, and the public has been allowed the opportunity to comment.

*\* Public comment will be asked on each agenda item. Do not sign below for agenda items.*

# Public Comment Sign-in

**Date: January 16, 2017**

*\*Please sign below for non-agenda items to be heard under New business: Public comment.*

<b>NAME</b> (Please Print Clearly)	<b>TOPIC</b> (Please Print Clearly)
1. Dick Shockley	Facility Advisory Update
2.	
3.	
4.	
5.	
6.	
7.	
8.	
9.	
10.	

# Regular Meeting

January 16, 2017

## Sign-in Sheet

<u>Name- please print</u>	<u>Signature</u>
1. Dick Shockley	RA Shockley
2. Brad Parsch	Brad Parsch
3. Bob FRANZEN	Bob Franzen
4. Cassandra Elwell	Cassandra Elwell
5. Mike Cron	Mike Cron
6.	
7.	
8.	
9.	
10.	
11.	
12.	
13.	
14.	
15.	
16.	
17.	
18.	
19.	
20.	
21.	
22.	
23.	
24.	
25.	
26.	
27.	
28.	
29.	
30.	

## Gallatin Gateway School Facilities Advisory Committee Facilities Planning Priorities Recommendations

The following recommendations are based on analysis of current status of facilities conditions during FAC committee review and discussions of the facilities analysis reports (2012 and 2016) by CTA-Beaudette Architects and Engineers, discussions with school personnel, and facilities walk-thru conducted with GGS Board of Trustees.

### Recommended Facilities Near-term Improvement Priorities

Priority	Improvement Measure	Cost Est	Annual Savings Est	Payback
1	Gym Heaters Replacement (CTA FIM #2)	\$55,284	\$1,000	NA
2	Gym Bleachers Replacement	unknown	NA	NA
3	LED Lighting Upgrade	\$10,880	\$640	17 mos

### Recommended Long-range Priorities

Priority	Improvement Measure	CTA Cost Est	Annual Savings Est	Payback
1	Heat Recovery Ventilation Upgrade	\$89,988	NA	NA
2	Temp Controls Upgrade	\$58,586	\$2,838	20 yr
3	Boiler System Upgrade	\$145,745	\$2,935	NA

Other facilities maintenance potential issues identified and requiring further analysis and consideration are listed below, without cost estimates or priority status at this time.

1. Flooring replacement for complete asbestos component removal.
2. Evaluation and potential upgrade of fire alarm system.
3. Evaluation of doors, windows, hardware, fire safety and security features.
4. Review and analysis of Fire Safety Inspection reports.
5. Evaluation of potential need for seismic upgrade of Gymnasium building structure.
6. Analysis of potential for installation of fire suppression sprinkler system.
7. Evaluation of water systems piping and delivery components.
8. Evaluation of hydronic heating system piping conditions.
9. Evaluation of interior and exterior finishes.
10. Lighting controls upgrade.

# Gallatin Gateway School

"Educating the Future"

100 Mill Street, PO Box 265, Gallatin Gateway, MT 59730

Phone: (406) 763-4415 Fax: (406) 763-4886

[www.gallatingatewayschool.com](http://www.gallatingatewayschool.com)

## MEMO

TO: Gallatin Gateway Board of Trustees

FROM: Carrie Fisher, Business Manager

SUBJECT: Warrant Register Summary

DATE: January 13, 2017

Warrant Numbers (including Direct Deposit/ACH):

Claim (A/P) Warrants #'s:  
35152-35167

Electronic Payment:  
BMO Mastercard (-99992)

Voided Claim (A/P) Warrant #'s:  
35168-35171

Payroll Warrant #'s:  
75185-75194

Direct Deposits/ACH #'s:  
-89682-89656

Voided Payroll Warrant #'s:  
None

Thank you.



Over spent expenditure

Warrant Claim	Vendor #/Name	Amount	Acct/Source/			
Line #	Invoice #/Inv Date/Description	Line Amount	PO #	Fund Org	Prog-Func	Obj Proj
99992E	1305 BMO MASTERCARD	6,932.50				
511						
1	CC-3574-3 12/02/16 SERVICE AGREEMENT- 2ND HALF	4,077.00		101	625	
	JOHNSON CONTROLS					
				101-2600-330		
2	CC-3574-3 11/22/16 REPLACE WATER FILTER IN FOU	370.00		101	625	
	CAMPBELLS PLUMBING & HEATING					
				101-2600-440		
3	CC-3574-3 11/28/16 GARBAGE SERVICE	472.34		101	625	
	REPUBLIC SERVICES #886					
				101-2600-431		
4	CC-3574-3 11/28/16 GARBAGE SERVICE	52.48		110	625	
	REPUBLIC SERVICES #886					
				110-2600-431		
5	CC-3574-3 11/19/16 LONG DISTANCE SERVICE	8.19		101	625	
	CENTURYLINK					
				101-2600-531		
6	CC-3574-3 11/19/16 LONG DISTANCE SERVICE	2.73		110	625	
	CENTURYLINK					
				110-2600-531		
7	CC-3574-3 12/01/16 INTERNET SERVICE	86.87		101	625	
	MONTANA OPTICOM					
				101-2300-530		
8	CC-3574-3 12/01/16 INTERNET SERVICE	26.06		110	625	
	MONTANA OPTICOM					
				110-2300-530		
9	CC-3574-3 12/01/16 INTERNET SERVICE	26.06		117	625	
	MONTANA OPTICOM					
				117-2300-530		
10	CC-3574-3 12/01/16 INTERNET SERVICE	34.75		128	625	
	MONTANA OPTICOM					
				128-2300-530		
11	CC-3574-3 12/01/16 PO BOX ANNUAL RENEWAL FEE	140.00		101	625	
	U.S. POSTAL SERVICE - PO					
				101-2300-532		
12	CC-3574-3 12/27/16 CLEANING SUPPLIES- BROOMS	15.98		101	625	
	ROSS DRESS FOR LESS					
				101-2600-610		
13	CC-3574-3 12/28/16 CLEANING SUPPLIES- BROOMS	17.25		101	625	
	FAMILY DOLLAR					
				101-2600-610		
14	CC-3574-3 12/29/16 DROPBOX PRO RENEWAL	99.00		101	625	
	DROPBOX INC					
				101-2500-681		
15	CC-3582-3 12/12/16 SHELVING & STORAGE TOTES	415.46		101	625	
	HOME DEPOT					
				101-2600-610		
16	CC-3582-3 12/08/16 INSTRUCTIONAL SUPPLIES	29.57		101	625	
	STAPLES CREDIT PLAN					
				101-1000-610		

01/13/17  
16:33:20

GALLATIN GATEWAY ELEMENTARY  
Check/Claim Details  
For the Accounting Period: 1/17

Page: 2 of 5  
Report ID: AP100W

\* ... Over spent expenditure

Warrant Claim	Vendor #/Name	Amount	Acct/Source/			
Line #	Invoice #/Inv Date/Description	Line Amount	PO #	Fund Org	Prog-Func	Obj Proj
17	CC-3590-3 12/10/16 STAFF DINNER PRIZES	50.00		115 625		162
	WALMART					
		CC Accounting: 115-		-100-2300-610-162		
18	CC-3590-3 12/10/16 CHRISTMAS GIVING (DONATION)	19.97		115 625		102
	WALMART					
		CC Accounting: 115-		-100-1000-610-102		
19	CC-3590-3 12/13/16 CHRISTMAS GIVING (DONATION)	295.00		115 625		102
	FARMHOUSE CAFE					
		CC Accounting: 115-		-100-1000-610-102		
20	CC-3590-3 12/14/16 CHRISTMAS GIVING (DONATION)	20.80		115 625		102
	JCPENNY					
		CC Accounting: 115-		-100-1000-610-102		
21	CC-3590-3 12/10/16 INSTRUCTOR RENEWAL FEE (MAT	75.00		101 625		
	EMERGENCY FIRST RESPONSE CORP.					
		CC Accounting: 101-		-100-1000-810		
22	CC-3590-3 12/10/16 1ST AID CARDS	260.00		117 625		
	EMERGENCY FIRST RESPONSE CORP.					
		CC Accounting: 117-		-610-1000-610		
23	CC-3590-3 12/19/16 STAFF CHRISTMAS DINNER	300.00		115 625		162
	FARMHOUSE CAFE					
		CC Accounting: 115-		-100-2300-610-162		
24	CC-3590-3 12/20/16 MEAL FOR TRAVEL TO TARGET R	37.99		101 625		
	TACO SANO					
		CC Accounting: 101-		-100-2400-582		
		<b>Total Check:</b>		<b>6,932.50</b>		
35152S	43 ALSCO-AMERICAN LINEN DIVISION					
	498	122.67				
1	LBIL127415 01/09/17 LINENS, RUGS, TOWELS, APRO	48.65		101 100-2600		610
2	LBIL127415 01/09/17 LINENS, RUGS, TOWELS, APRO	4.86*		110 100-2700		610
3	LBIL127415 01/09/17 LINENS, RUGS, TOWELS, APRO	7.30*		112 910-3100		610
4	LBIL126697 12/12/16 LINENS,RUGS,TOWELS, APRONS	49.49		101 100-2600		610
5	LBIL126697 12/12/16 LINENS,RUGS,TOWELS, APRONS	4.95*		110 100-2700		610
6	LBIL126697 12/12/16 LINENS,RUGS,TOWELS, APRONS	7.42*		112 910-3100		610
		<b>Total Check:</b>		<b>122.67</b>		
35153S	66 ANDERSON, TRAVIS					
	499	224.21				
1	12/23/16 MILEAGE REIMBURSEMENT- TARGET	224.21		101 100-2400		582
		<b>Total Check:</b>		<b>224.21</b>		

01/13/17  
16:33:20

GALLATIN GATEWAY ELEMENTARY  
Check/Claim Details  
For the Accounting Period: 1/17

Page: 3 of 5  
Report ID: AP100W

\* Over spent expenditure

Warrant Claim	Vendor #/Name	Amount	Acct/Source/			
Line #	Invoice #/Inv Date/Description	Line Amount	PO #	Fund Org	Prog-Func	Obj Proj
35154S	132 BLACK MOUNTAIN SOFTWARE					
	500	5,413.00				
1	21867 01/01/17 BMS ANNUAL RENEWAL	5,413.00		101	100-2500	680
	<b>Total Check:</b>	<b>5,413.00</b>				
35155S	197 BUILDING CODES BUREAU/BOILER					
	507	124.00				
1	3435683 12/13/16 BOILER OPERATING FEE- #010245	31.00		101	100-2600	440
2	3435692 12/13/16 BOILER OPERATING FEE- #010246	31.00		101	100-2600	440
3	3435674 12/13/16 BOILER OPERATING FEE- #006690	31.00		101	100-2600	440
4	3435665 12/13/16 BOILER OPERATING FEE- #006681	31.00		101	100-2600	440
	<b>Total Check:</b>	<b>124.00</b>				
35156S	262 COMMERCIAL ENERGY OF MONTANA INC					
	514	1,012.40				
1	NWE040060 01/05/17 GAS ON NWE SYSTEM	1,012.40		101	100-2600	411
	<b>Total Check:</b>	<b>1,012.40</b>				
35157S	281 COSTCO WHOLESALE MEMBERSHIP					
	501	98.26				
1	12/01/16 MEMBERSHIP RENEWAL	110.00		101	100-2400	810
2	12/01/16 CREDIT CERTIFICATE	-11.74		101	100-2400	810
	<b>Total Check:</b>	<b>98.26</b>				
35158S	370 ELITE COMMERCIAL CLEANERS INC.					
	502	2,880.00				
1	1627 01/03/17 CUSTODIAL/CLEANING SERVICES	2,304.00		101	100-2600	433
2	1627 01/03/17 CUSTODIAL/CLEANING SERVICES	576.00*		110	110-2600	433
	<b>Total Check:</b>	<b>2,880.00</b>				
35159S	420 FOOD SERVICES OF AMERICA					
	512	4,098.16				
1	5247434 01/06/17 FOOD	109.14		101	910-3100	630
2	5247434 01/06/17 FOOD	254.66*		112	910-3100	630
3	5249000 01/10/17 FOOD	257.91		101	910-3100	630
4	5249000 01/10/17 FOOD	601.78*		112	910-3100	630
5	5245127 01/03/17 FOOD	232.46		101	910-3100	630
6	5245127 01/03/17 FOOD	542.41*		112	910-3100	630
7	5243832 12/30/16 FOOD	198.34		101	910-3100	630
8	5243832 12/30/16 FOOD	462.80*		112	910-3100	630
9	5237433 12/16/16 FOOD	42.05		101	910-3100	630
10	5237433 12/16/16 FOOD	98.11*		112	910-3100	630
11	5234967 12/13/16 FOOD	249.63		101	910-3100	630
12	5234967 12/13/16 FOOD	582.48*		112	910-3100	630
13	5233180 12/09/16 FOOD	139.92		101	910-3100	630
14	5233180 12/09/16 FOOD	326.47*		112	910-3100	630
	<b>Total Check:</b>	<b>4,098.16</b>				

01/13/17  
16:33:20

GALLATIN GATEWAY ELEMENTARY  
Check/Claim Details  
For the Accounting Period: 1/17

Page: 4 of 5  
Report ID: AP100W

\* ... Over spent expenditure

Warrant Claim	Vendor #/Name	Amount	Acct/Source/			
Line #	Invoice #/Inv Date/Description	Line Amount	PO #	Fund Org	Prog-Func	Obj Proj
35160S	441 GALLATIN GATEWAY WATER & SEWER					
	503	18.00				
1	1954 12/31/16 BENEFITED LOT CHARGE	18.00		101	100-2600	421
	<b>Total Check:</b>	<b>18.00</b>				
35161S	577 J&H INC					
	504	325.64				
1	491490 12/15/16 COPIER- BUSINESS OFFICE	20.05		101	100-2500	550
2	491489 12/15/16 COPIER-OFFICE	305.59		101	100-2300	550
	<b>Total Check:</b>	<b>325.64</b>				
35162S	643 LAST BEST PLACE LANDSCAPING, INC					
	505	1,870.00				
1	16-12-123 01/01/17 SNOW REMOVAL/PLOWING	1,402.50*		101	100-2600	432
2	16-12-123 01/01/17 SNOW REMOVAL/PLOWING	467.50*		110	100-2600	432
	<b>Total Check:</b>	<b>1,870.00</b>				
35163S	1295 MADISON MECHANIX, LLC					
	506	322.48				
1	1129 12/12/16 REPAIR- BLOCK HEATER PLUG	322.48*		110	100-2700	440
	<b>Total Check:</b>	<b>322.48</b>				
35164S	688 MASTERCARD					
	510	5.73				
1	12/22/16 FINANCE CHARGES	5.73*		101	100-2500	810
	<b>Total Check:</b>	<b>5.73</b>				
35165S	839 NEOPOST USA INC.					
	509	83.25				
1	54461246 12/17/16 EQUIPMENT RENTAL- POSTAGE MA	83.25		101	100-2300	532
	<b>Total Check:</b>	<b>83.25</b>				
35166S	856 NORTHWESTERN ENERGY					
	515	2,675.97				
1	01/05/17 ELECTRIC SERVICE	1,220.80		101	100-2600	412
2	01/05/17 ELECTRIC SERVICE	305.19		110	100-2600	412
3	01/05/17 UNMETERED SERVICE	58.98		101	100-2600	410
4	01/05/17 UNMETERED SERVICE	58.98		110	100-2600	410
5	01/05/17 NATURAL GAS SERVICE	1,032.02		101	100-2600	411
	<b>Total Check:</b>	<b>2,675.97</b>				

01/13/17  
16:33:20

GALLATIN GATEWAY ELEMENTARY  
Check/Claim Details  
For the Accounting Period: 1/17

Page: 5 of 5  
Report ID: AP100W

\* ... Over spent expenditure

Warrant Claim	Vendor #/Name	Amount	Acct/Source/			
Line #	Invoice #/Inv Date/Description	Line Amount	PO #	Fund Org	Prog-Func	Obj Proj
35167S	666 THOMAS, LORRIE					
508		190.00				
1	12/28/16 BACTERIOLOGICAL-JAN	100.00		101	100-2600	421
2	12/28/16 CHEMICAL TESTING- WATER	90.00		101	100-2600	421
	<b>Total Check:</b>	<b>190.00</b>				

# of Claims 17      Total: 26,396.27

01/13/17  
17:12:04

GALLATIN GATEWAY ELEMENTARY  
Statement of Expenditure - Budget vs. Actual Report  
For the Accounting Period: 1 / 17

Page: 1 of 1  
Report ID: B100F

Fund	Committed Current Month	Committed YTD	Original Appropriation	Current Appropriation	Available Appropriation	% Committed
101 GENERAL	90,479.24	484,424.56	1,210,129.00	1,201,754.00	717,329.44	40 %
110 TRANSPORTATION	6,714.43	47,185.01	99,576.00	99,576.00	52,390.99	47 %
111 BUS DEPRECIATION	0.00	0.00	122,212.00	122,212.00	122,212.00	0 %
113 TUITION	0.00	0.00	856.00	856.00	856.00	0 %
114 RETIREMENT	11,252.30	64,909.17	186,165.00	186,165.00	121,255.83	35 %
117 ADULT EDUCATION FUND	506.30	1,914.82	21,000.00	21,000.00	19,085.18	9 %
128 TECHNOLOGY FUNDS	1,160.43	9,417.46	20,340.00	20,340.00	10,922.54	46 %
129 FLEXIBILITY FUND	0.00	0.00	9,313.00	9,313.00	9,313.00	0 %
150 DEBT SERVICE	0.00	8,432.50	116,515.00	116,515.00	108,082.50	7 %
161 BUILDING RESERVE	0.00	25,267.72	88,208.00	88,208.00	62,940.28	29 %
<b>Grand Total:</b>	<b>110,112.70</b>	<b>641,551.24</b>	<b>1,874,314.00</b>	<b>1,865,939.00</b>	<b>1,224,387.76</b>	<b>34 %</b>

01/13/17  
17:11:11

GALLATIN GATEWAY ELEMENTARY  
Statement of Expenditure - Budget vs. Actual Report  
For the Accounting Period: 1 / 17

Page: 1 of 17  
Report ID: B100

101 GENERAL

Program-Function-Object	Committed Current Month	Committed YTD	Original Appropriation	Current Appropriation	Available Appropriation	% Committed
100 ELEMENTARY						
100 ELEMENTARY						
1000 INSTRUCTION						
112 CERTIFIED SALARIES	39,138.88	195,694.41	469,673.00	469,673.00	273,978.59	41 %
117 AIDES	617.40	3,222.66	9,720.00	9,720.00	6,497.34	33 %
120 SUBSTITUTE TEACHERS	0.00	0.00	8,000.00	0.00	0.00	0 %
122 SUBSTITUTE TEACHERS	750.00	1,800.00	8,000.00	8,000.00	6,200.00	22 %
150 STIPEND	0.00	1,125.00	1,200.00	1,200.00	75.00	93 %
190 LEAVE - PAY	0.00	809.63	20,000.00	20,000.00	19,190.37	4 %
250 WORKERS' COMPENSATION	237.34	1,253.66	2,868.00	2,868.00	1,614.34	43 %
260 HEALTH INS	6,380.22	31,778.56	69,368.00	69,368.00	37,589.44	45 %
540 ADVERTISING	0.00	897.41	500.00	500.00	-397.41	179 %
582 TRAVEL OUT-OF-DISTRICT/INSERVI	0.00	485.22	6,000.00	6,000.00	5,514.78	8 %
610 SUPPLIES	29.57	1,274.42	26,000.00	26,000.00	24,725.58	4 %
640 BOOKS	0.00	154.89	6,000.00	6,000.00	5,845.11	2 %
660 MINOR EQUIPMENT	0.00	309.59	6,000.00	6,000.00	5,690.41	5 %
680 COMPUTER SOFTWARE	0.00	113.00	1,800.00	1,800.00	1,687.00	6 %
681 MAJOR COMPUTER SOFTWARE	0.00	738.73	1,000.00	1,000.00	261.27	73 %
682 SUPPLIES- TECHNOLOGY	0.00	500.49	1,500.00	1,500.00	999.51	33 %
780 MAJOR TECHNOLOGY HARDWARE	0.00	4,671.00	9,500.00	9,500.00	4,829.00	49 %
810 DUES AND FEES	75.00	75.00	500.00	500.00	425.00	15 %
Function Total:	47,228.41	244,903.67	647,629.00	639,629.00	394,725.33	38 %
2100 STUDENTS						
113 PROFESSIONAL-OTHER CERTIFIED S	118.81	567.56	2,771.00	2,771.00	2,203.44	20 %
250 WORKERS' COMPENSATION	0.70	3.31	16.00	16.00	12.69	20 %
610 SUPPLIES	0.00	0.00	250.00	250.00	250.00	0 %
Function Total:	119.51	570.87	3,037.00	3,037.00	2,466.13	18 %
2111 SUPERVISION OF ATTENDANCE/SOCI						
111 ADMINISTRATIVE SALARY	68.66	480.65	824.00	824.00	343.35	58 %
190 LEAVE - PAY	0.00	0.00	95.00	95.00	95.00	0 %
250 WORKERS' COMPENSATION	0.39	2.70	5.00	5.00	2.30	54 %
260 HEALTH INS	6.14	41.87	74.00	74.00	32.13	56 %
Function Total:	75.19	525.22	998.00	998.00	472.78	52 %
2112 ATTENDANCE SERVICES						
610 SUPPLIES	0.00	100.00	100.00	100.00	0.00	100 %
Function Total:	0.00	100.00	100.00	100.00	0.00	100 %
2120 GUIDANCE PROGRAM						
113 PROFESSIONAL-OTHER CERTIFIED S	1,858.33	9,291.65	22,299.00	22,299.00	13,007.35	41 %
190 LEAVE - PAY	0.00	0.00	900.00	900.00	900.00	0 %
250 WORKERS' COMPENSATION	10.89	54.23	131.00	131.00	76.77	41 %
260 HEALTH INS	614.50	2,922.52	7,374.00	7,374.00	4,451.48	39 %
582 TRAVEL OUT-OF-DISTRICT/INSERVI	0.00	0.00	500.00	500.00	500.00	0 %
610 SUPPLIES	0.00	0.00	400.00	400.00	400.00	0 %
Function Total:	2,483.72	12,268.40	31,604.00	31,604.00	19,335.60	38 %
2123 GUIDANCE- TESTING SERVICES						
582 TRAVEL OUT-OF-DISTRICT/INSERVI	0.00	75.00	1,250.00	1,250.00	1,175.00	6 %
610 SUPPLIES	0.00	0.00	1,000.00	1,000.00	1,000.00	0 %
Function Total:	0.00	75.00	2,250.00	2,250.00	2,175.00	3 %

01/13/17  
17:11:11

GALLATIN GATEWAY ELEMENTARY  
Statement of Expenditure - Budget vs. Actual Report  
For the Accounting Period: 1 / 17

Page: 2 of 17  
Report ID: B100

101 GENERAL

Program-Function-Object	Committed Current Month	Committed YTD	Original Appropriation	Current Appropriation	Available Appropriation	% Committed
100 ELEMENTARY						
100 ELEMENTARY						
2210 IMPROVEMENT OF INSTRUCTION SER						
111 ADMINISTRATIVE SALARY	274.67	1,922.69	3,296.00	3,296.00	1,373.31	58 %
190 LEAVE - PAY	0.00	0.00	380.00	380.00	380.00	0 %
250 WORKERS' COMPENSATION	1.61	11.23	19.00	19.00	7.77	59 %
260 HEALTH INS	24.58	167.59	295.00	295.00	127.41	56 %
<b>Function Total:</b>	<b>300.86</b>	<b>2,101.51</b>	<b>3,990.00</b>	<b>3,990.00</b>	<b>1,888.49</b>	<b>52 %</b>
2225 LIBRARY SERVICES						
113 PROFESSIONAL-OTHER CERTIFIED S	1,657.29	8,286.44	19,887.00	19,887.00	11,600.56	41 %
190 LEAVE - PAY	0.00	0.00	1,162.00	1,162.00	1,162.00	0 %
250 WORKERS' COMPENSATION	9.71	48.37	117.00	117.00	68.63	41 %
260 HEALTH INS	307.25	1,484.27	3,687.00	3,687.00	2,202.73	40 %
610 SUPPLIES	0.00	0.00	600.00	600.00	600.00	0 %
640 BOOKS	0.00	23.77	2,350.00	2,350.00	2,326.23	1 %
650 PERIODICALS	0.00	0.00	250.00	250.00	250.00	0 %
660 MINOR EQUIPMENT	0.00	0.00	500.00	500.00	500.00	0 %
680 COMPUTER SOFTWARE	0.00	0.00	900.00	900.00	900.00	0 %
810 DUES AND FEES	0.00	0.00	60.00	60.00	60.00	0 %
<b>Function Total:</b>	<b>1,974.25</b>	<b>9,842.85</b>	<b>29,513.00</b>	<b>29,513.00</b>	<b>19,670.15</b>	<b>33 %</b>
2300 GENERAL ADMINISTRATION						
111 ADMINISTRATIVE SALARY	2,609.33	15,793.32	31,312.00	31,312.00	15,518.68	50 %
190 LEAVE - PAY	0.00	0.00	1,895.00	1,895.00	1,895.00	0 %
250 WORKERS' COMPENSATION	15.29	92.16	183.00	183.00	90.84	50 %
260 HEALTH INS	233.51	1,385.27	2,802.00	2,802.00	1,416.73	49 %
330 OTHER PROFESSIONAL SERVICES	0.00	2,516.80	10,000.00	10,000.00	7,483.20	25 %
331 PROF. SERV. AUDITOR	0.00	0.00	6,200.00	6,200.00	6,200.00	0 %
332 PROF. SERV. LEGAL	0.00	1,000.00	5,800.00	5,800.00	4,800.00	17 %
530 COMMUNICATIONS- INTERNET SERVICE	86.87	1,354.01	4,000.00	4,000.00	2,645.99	33 %
531 COMMUNICATIONS- TELEPHONE	0.00	0.00	3,000.00	3,000.00	3,000.00	0 %
532 POSTAGE	223.25	1,494.25	1,500.00	1,500.00	5.75	99 %
540 ADVERTISING	0.00	39.61	1,000.00	1,000.00	960.39	3 %
550 PRINTING/DUPLICATING	305.59	1,798.10	6,000.00	6,000.00	4,201.90	29 %
582 TRAVEL OUT-OF-DISTRICT/INSERVI	0.00	200.00	2,500.00	2,500.00	2,300.00	8 %
610 SUPPLIES	0.00	491.15	6,500.00	6,500.00	6,008.85	7 %
660 MINOR EQUIPMENT	0.00	0.00	2,500.00	2,500.00	2,500.00	0 %
810 DUES AND FEES	0.00	500.00	8,000.00	8,000.00	7,500.00	6 %
<b>Function Total:</b>	<b>3,473.84</b>	<b>26,664.67</b>	<b>93,192.00</b>	<b>93,192.00</b>	<b>66,527.33</b>	<b>28 %</b>
2314 ELECTIONS						
330 OTHER PROFESSIONAL SERVICES	0.00	0.00	277.00	277.00	277.00	0 %
540 ADVERTISING	0.00	0.00	75.00	75.00	75.00	0 %
<b>Function Total:</b>	<b>0.00</b>	<b>0.00</b>	<b>352.00</b>	<b>352.00</b>	<b>352.00</b>	<b>0 %</b>
2400 SCHOOL ADMINISTRATION						
111 ADMINISTRATIVE SALARY	1,373.33	12,085.32	16,480.00	16,480.00	4,394.68	73 %
115 OFFICE/CLERICAL SALARY	2,350.54	18,566.62	31,296.00	31,296.00	12,729.38	59 %
125 SUBSTITUTE- OFFICE/CLERICAL	40.50	375.80	0.00	0.00	-375.80	*** %
190 LEAVE - PAY	0.00	0.00	5,578.00	5,578.00	5,578.00	0 %
250 WORKERS' COMPENSATION	22.05	179.55	279.00	279.00	99.45	64 %
260 HEALTH INS	217.85	1,690.44	2,614.00	2,614.00	923.56	64 %



101 GENERAL

Program-Function-Object	Committed Current Month	Committed YTD	Original Appropriation	Current Appropriation	Available Appropriation	% Committed
100 ELEMENTARY						
100 ELEMENTARY						
2400 SCHOOL ADMINISTRATION						
340 TECHNICAL SERVICES	0.00	800.00	1,275.00	1,275.00	475.00	62 %
582 TRAVEL OUT-OF-DISTRICT/INSERVI	262.20	1,758.84	2,500.00	2,500.00	741.16	70 %
610 SUPPLIES	0.00	157.03	900.00	900.00	742.97	17 %
780 MAJOR TECHNOLOGY HARDWARE	0.00	1,364.40	1,500.00	1,500.00	135.60	90 %
810 DUES AND FEES	98.26	98.26	450.00	450.00	351.74	21 %
<b>Function Total:</b>	<b>4,364.73</b>	<b>37,076.26</b>	<b>62,872.00</b>	<b>62,872.00</b>	<b>25,795.74</b>	<b>58 %</b>
2500 BUSINESS SERVICES						
111 ADMINISTRATIVE SALARY	3,286.42	23,986.73	39,984.00	39,984.00	15,997.27	59 %
190 LEAVE - PAY	0.00	0.00	8,439.00	8,439.00	8,439.00	0 %
250 WORKERS' COMPENSATION	18.67	134.08	224.00	224.00	89.92	59 %
260 HEALTH INS	116.63	816.42	1,400.00	1,400.00	583.58	58 %
330 OTHER PROFESSIONAL SERVICES	0.00	0.00	5,000.00	5,000.00	5,000.00	0 %
532 POSTAGE	0.00	6.45	100.00	100.00	93.55	6 %
550 PRINTING/DUPLICATING	20.05	167.27	300.00	300.00	132.73	55 %
582 TRAVEL OUT-OF-DISTRICT/INSERVI	0.00	164.16	2,000.00	2,000.00	1,835.84	8 %
610 SUPPLIES	0.00	57.75	500.00	500.00	442.25	11 %
680 COMPUTER SOFTWARE	5,413.00	5,413.00	5,424.00	5,424.00	11.00	99 %
681 MAJOR COMPUTER SOFTWARE	99.00	99.00	0.00	0.00	-99.00	*** %
810 DUES AND FEES	5.73	1,550.25	1,500.00	1,500.00	-50.25	103 %
<b>Function Total:</b>	<b>8,959.50</b>	<b>32,395.11</b>	<b>64,871.00</b>	<b>64,871.00</b>	<b>32,475.89</b>	<b>49 %</b>
2600 OPERATIONS & MAINTENANCE						
111 ADMINISTRATIVE SALARY	274.67	1,922.67	3,296.00	3,296.00	1,373.33	58 %
114 CUSTODIAL SALARY	186.00	4,050.00	3,600.00	3,600.00	-450.00	112 %
190 LEAVE - PAY	0.00	0.00	376.00	376.00	376.00	0 %
250 WORKERS' COMPENSATION	2.70	34.95	40.00	40.00	5.05	87 %
260 HEALTH INS	24.58	167.58	608.00	608.00	440.42	27 %
330 OTHER PROFESSIONAL SERVICES	4,077.00	4,077.00	0.00	0.00	-4,077.00	*** %
410 POWER - LIGHTS	58.98	420.36	840.00	840.00	419.64	50 %
411 NATURAL GAS	2,044.42	4,510.90	12,600.00	12,600.00	8,089.10	35 %
412 ELECTRICITY	1,220.80	8,094.31	20,475.00	20,475.00	12,380.69	39 %
421 WATER TESTS	208.00	967.40	2,700.00	2,700.00	1,732.60	35 %
431 DISPOSAL SERVICE	472.34	2,922.41	6,000.00	6,000.00	3,077.59	48 %
432 SNOW PLOWING SERVICES	1,402.50	1,402.50	0.00	0.00	-1,402.50	*** %
433 CUSTODIAL SERVICES	2,304.00	16,128.00	27,648.00	27,648.00	11,520.00	58 %
440 REPAIR AND MAINTENANCE SERVICE	494.00	13,899.20	28,201.00	28,201.00	14,301.80	49 %
520 INSURANCE	0.00	0.00	10,920.00	10,920.00	10,920.00	0 %
531 COMMUNICATIONS- TELEPHONE	8.19	538.30	0.00	0.00	-538.30	*** %
582 TRAVEL OUT-OF-DISTRICT/INSERVI	0.00	35.64	0.00	0.00	-35.64	*** %
610 SUPPLIES	546.83	3,305.25	7,200.00	7,200.00	3,894.75	45 %
660 MINOR EQUIPMENT	0.00	0.00	1,500.00	1,500.00	1,500.00	0 %
810 DUES AND FEES	0.00	100.00	0.00	0.00	-100.00	*** %
<b>Function Total:</b>	<b>13,325.01</b>	<b>62,576.47</b>	<b>126,004.00</b>	<b>126,004.00</b>	<b>63,427.53</b>	<b>49 %</b>

101 GENERAL

Program-Function-Object	Committed Current Month	Committed YTD	Original Appropriation	Current Appropriation	Available Appropriation	% Committed
100 ELEMENTARY						
100 ELEMENTARY						
2630 GROUNDS- CARE AND UPKEEP						
432 SNOW PLOWING SERVICES	0.00	0.00	3,000.00	3,000.00	3,000.00	0 %
<b>Function Total:</b>	<b>0.00</b>	<b>0.00</b>	<b>3,000.00</b>	<b>3,000.00</b>	<b>3,000.00</b>	<b>0 %</b>
<b>Program Total:</b>	<b>82,305.02</b>	<b>429,100.03</b>	<b>1,069,412.00</b>	<b>1,061,412.00</b>	<b>632,311.97</b>	<b>40 %</b>
<b>Program Group Total:</b>	<b>82,305.02</b>	<b>429,100.03</b>	<b>1,069,412.00</b>	<b>1,061,412.00</b>	<b>632,311.97</b>	<b>40 %</b>
200						
280 SPECIAL EDUCATION						
1000 INSTRUCTION						
112 CERTIFIED SALARIES	3,969.83	19,849.15	47,638.00	47,638.00	27,788.85	41 %
117 AIDES	714.00	4,020.00	18,720.00	18,720.00	14,700.00	21 %
120 SUBSTITUTE TEACHERS	0.00	0.00	375.00	0.00	0.00	0 %
122 SUBSTITUTE TEACHERS	0.00	0.00	375.00	375.00	375.00	0 %
190 LEAVE - PAY	0.00	0.00	3,322.00	3,322.00	3,322.00	0 %
250 WORKERS' COMPENSATION	27.44	139.26	290.00	290.00	150.74	48 %
260 HEALTH INS	720.00	3,389.00	8,274.00	8,274.00	4,885.00	40 %
582 TRAVEL OUT-OF-DISTRICT/INSERVI	0.00	0.00	500.00	500.00	500.00	0 %
610 SUPPLIES	0.00	61.95	400.00	400.00	338.05	15 %
<b>Function Total:</b>	<b>5,431.27</b>	<b>27,459.36</b>	<b>79,894.00</b>	<b>79,519.00</b>	<b>52,059.64</b>	<b>34 %</b>
2141 SUPERVISION OF PSYCHOLOGICAL S						
119 OTHER SUPERVISORY SALARIES	206.00	1,442.00	2,472.00	2,472.00	1,030.00	58 %
190 LEAVE - PAY	0.00	0.00	285.00	285.00	285.00	0 %
250 WORKERS' COMPENSATION	1.21	8.44	15.00	15.00	6.56	56 %
260 HEALTH INS	18.43	125.68	221.00	221.00	95.32	56 %
<b>Function Total:</b>	<b>225.64</b>	<b>1,576.12</b>	<b>2,993.00</b>	<b>2,993.00</b>	<b>1,416.88</b>	<b>52 %</b>
2400 SCHOOL ADMINISTRATION						
582 TRAVEL OUT-OF-DISTRICT/INSERVI	0.00	4.45	100.00	100.00	95.55	4 %
<b>Function Total:</b>	<b>0.00</b>	<b>4.45</b>	<b>100.00</b>	<b>100.00</b>	<b>95.55</b>	<b>4 %</b>
6200 RESOURCES TRANSFERED						
920 RESOURCES TRANSFER TO COOP	0.00	1,284.00	2,568.00	2,568.00	1,284.00	50 %
<b>Function Total:</b>	<b>0.00</b>	<b>1,284.00</b>	<b>2,568.00</b>	<b>2,568.00</b>	<b>1,284.00</b>	<b>50 %</b>
<b>Program Total:</b>	<b>5,656.91</b>	<b>30,323.93</b>	<b>85,555.00</b>	<b>85,180.00</b>	<b>54,856.07</b>	<b>35 %</b>
<b>Program Group Total:</b>	<b>5,656.91</b>	<b>30,323.93</b>	<b>85,555.00</b>	<b>85,180.00</b>	<b>54,856.07</b>	<b>35 %</b>
300						
365 INDIAN EDUCATION						
1000 INSTRUCTION						
582 TRAVEL OUT-OF-DISTRICT/INSERVI	0.00	0.00	1,000.00	1,000.00	1,000.00	0 %
610 SUPPLIES	0.00	0.00	1,000.00	1,000.00	1,000.00	0 %
640 BOOKS	0.00	0.00	1,000.00	1,000.00	1,000.00	0 %
810 DUES AND FEES	0.00	0.00	200.00	200.00	200.00	0 %
<b>Function Total:</b>	<b>0.00</b>	<b>0.00</b>	<b>3,200.00</b>	<b>3,200.00</b>	<b>3,200.00</b>	<b>0 %</b>
<b>Program Total:</b>	<b>0.00</b>	<b>0.00</b>	<b>3,200.00</b>	<b>3,200.00</b>	<b>3,200.00</b>	<b>0 %</b>
368 DATA FOR ACHIEVEMENT						
1000 INSTRUCTION						
680 COMPUTER SOFTWARE	0.00	3,150.55	3,200.00	3,200.00	49.45	98 %
<b>Function Total:</b>	<b>0.00</b>	<b>3,150.55</b>	<b>3,200.00</b>	<b>3,200.00</b>	<b>49.45</b>	<b>98 %</b>
<b>Program Total:</b>	<b>0.00</b>	<b>3,150.55</b>	<b>3,200.00</b>	<b>3,200.00</b>	<b>49.45</b>	<b>98 %</b>
<b>Program Group Total:</b>	<b>0.00</b>	<b>3,150.55</b>	<b>6,400.00</b>	<b>6,400.00</b>	<b>3,249.45</b>	<b>49 %</b>

101 GENERAL

Program-Function-Object	Committed Current Month	Committed YTD	Original Appropriation	Current Appropriation	Available Appropriation	% Committed
700						
710 EXTRACURRICULAR PROGRAM						
3400 EXTRACURRICULAR ACTIVITIES						
150 STIPEND	0.00	975.00	12,345.00	12,345.00	11,370.00	7 %
250 WORKERS' COMPENSATION	0.00	5.68	72.00	72.00	66.32	7 %
260 HEALTH INS	0.00	181.79	157.00	157.00	-24.79	115 %
<b>Function Total:</b>	<b>0.00</b>	<b>1,162.47</b>	<b>12,574.00</b>	<b>12,574.00</b>	<b>11,411.53</b>	<b>9 %</b>
<b>Program Total:</b>	<b>0.00</b>	<b>1,162.47</b>	<b>12,574.00</b>	<b>12,574.00</b>	<b>11,411.53</b>	<b>9 %</b>
720 ATHLETICS						
3500 EXTRACURRICULAR ATHLETICS						
* 115 OFFICE/CLERICAL SALARY	116.67	1,191.68	0.00	0.00	-1,191.68	*** %
119 OTHER SUPERVISORY SALARIES	68.67	597.35	824.00	824.00	226.65	72 %
150 STIPEND	0.00	4,500.00	6,100.00	6,100.00	1,600.00	73 %
190 LEAVE - PAY	0.00	0.00	95.00	95.00	95.00	0 %
250 WORKERS' COMPENSATION	1.08	36.60	41.00	41.00	4.40	89 %
260 HEALTH INS	19.78	206.15	74.00	74.00	-132.15	278 %
<b>Function Total:</b>	<b>206.20</b>	<b>6,531.78</b>	<b>7,134.00</b>	<b>7,134.00</b>	<b>602.22</b>	<b>91 %</b>
<b>Program Total:</b>	<b>206.20</b>	<b>6,531.78</b>	<b>7,134.00</b>	<b>7,134.00</b>	<b>602.22</b>	<b>91 %</b>
<b>Program Group Total:</b>	<b>206.20</b>	<b>7,694.25</b>	<b>19,708.00</b>	<b>19,708.00</b>	<b>12,013.75</b>	<b>39 %</b>
900						
910 FOOD SERVICES						
3100 FOOD SERVICES						
116 COOKS	746.36	4,448.81	11,792.00	11,792.00	7,343.19	37 %
119 OTHER SUPERVISORY SALARIES	206.00	1,442.00	2,472.00	2,472.00	1,030.00	58 %
126 SUBSTITUTE COOKS	0.00	37.50	0.00	0.00	-37.50	*** %
190 LEAVE - PAY	0.00	0.00	285.00	285.00	285.00	0 %
250 WORKERS' COMPENSATION	55.06	330.14	867.00	867.00	536.86	38 %
260 HEALTH INS	74.24	415.24	688.00	688.00	272.76	60 %
330 OTHER PROFESSIONAL SERVICES	0.00	134.00	100.00	100.00	-34.00	134 %
540 ADVERTISING	0.00	346.06	350.00	350.00	3.94	98 %
582 TRAVEL OUT-OF-DISTRICT/INSERVI	0.00	145.00	500.00	500.00	355.00	29 %
610 SUPPLIES	0.00	80.27	2,000.00	2,000.00	1,919.73	4 %
630 FOOD	1,229.45	6,776.78	10,000.00	10,000.00	3,223.22	67 %
<b>Function Total:</b>	<b>2,311.11</b>	<b>14,155.80</b>	<b>29,054.00</b>	<b>29,054.00</b>	<b>14,898.20</b>	<b>48 %</b>
<b>Program Total:</b>	<b>2,311.11</b>	<b>14,155.80</b>	<b>29,054.00</b>	<b>29,054.00</b>	<b>14,898.20</b>	<b>48 %</b>
<b>Program Group Total:</b>	<b>2,311.11</b>	<b>14,155.80</b>	<b>29,054.00</b>	<b>29,054.00</b>	<b>14,898.20</b>	<b>48 %</b>
<b>Fund Total:</b>	<b>90,479.24</b>	<b>484,424.56</b>	<b>1,210,129.00</b>	<b>1,201,754.00</b>	<b>717,329.44</b>	<b>40 %</b>

110 TRANSPORTATION

Program-Function-Object	Committed Current Month	Committed YTD	Original Appropriation	Current Appropriation	Available Appropriation	% Committed
100 ELEMENTARY						
100 ELEMENTARY						
2300 GENERAL ADMINISTRATION						
530 COMMUNICATIONS- INTERNET SERVICE	26.06	406.20	1,350.00	1,350.00	943.80	30 %
<b>Function Total:</b>	<b>26.06</b>	<b>406.20</b>	<b>1,350.00</b>	<b>1,350.00</b>	<b>943.80</b>	<b>30 %</b>
2500 BUSINESS SERVICES						
111 ADMINISTRATIVE SALARY	1,095.58	7,995.14	12,941.00	12,941.00	4,945.86	61 %
190 LEAVE - PAY	0.00	0.00	2,500.00	2,500.00	2,500.00	0 %
250 WORKERS' COMPENSATION	6.23	44.68	359.00	359.00	314.32	12 %
260 HEALTH INS	38.87	272.08	0.00	0.00	-272.08	*** %
<b>Function Total:</b>	<b>1,140.68</b>	<b>8,311.90</b>	<b>15,800.00</b>	<b>15,800.00</b>	<b>7,488.10</b>	<b>52 %</b>
2600 OPERATIONS & MAINTENANCE						
410 POWER - LIGHTS	58.98	420.36	840.00	840.00	419.64	50 %
412 ELECTRICITY	305.19	2,023.57	2,520.00	2,520.00	496.43	80 %
431 DISPOSAL SERVICE	52.48	324.70	900.00	900.00	575.30	36 %
432 SNOW PLOWING SERVICES	467.50	467.50	0.00	0.00	-467.50	*** %
433 CUSTODIAL SERVICES	0.00	1,728.00	7,000.00	7,000.00	5,272.00	24 %
440 REPAIR AND MAINTENANCE SERVICE	0.00	210.00	1,500.00	1,500.00	1,290.00	14 %
531 COMMUNICATIONS- TELEPHONE	2.73	179.44	700.00	700.00	520.56	25 %
<b>Function Total:</b>	<b>886.88</b>	<b>5,353.57</b>	<b>13,460.00</b>	<b>13,460.00</b>	<b>8,106.43</b>	<b>39 %</b>
2630 GROUNDS- CARE AND UPKEEP						
432 SNOW PLOWING SERVICES	0.00	0.00	1,000.00	1,000.00	1,000.00	0 %
<b>Function Total:</b>	<b>0.00</b>	<b>0.00</b>	<b>1,000.00</b>	<b>1,000.00</b>	<b>1,000.00</b>	<b>0 %</b>
2700 STUDENT TRANSPORTATION						
115 OFFICE/CLERICAL SALARY	261.21	2,062.45	4,000.00	4,000.00	1,937.55	51 %
118 BUS DRIVERS	1,486.90	9,809.01	20,000.00	20,000.00	10,190.99	49 %
119 OTHER SUPERVISORY SALARIES	1,716.67	12,016.68	21,000.00	21,000.00	8,983.32	57 %
125 SUBSTITUTE- OFFICE/CLERICAL	4.50	41.70	0.00	0.00	-41.70	*** %
190 LEAVE - PAY	0.00	0.00	3,650.00	3,650.00	3,650.00	0 %
250 WORKERS' COMPENSATION	119.06	787.46	2,000.00	2,000.00	1,212.54	39 %
260 HEALTH INS	164.18	1,119.14	1,800.00	1,800.00	680.86	62 %
330 OTHER PROFESSIONAL SERVICES	0.00	124.50	600.00	600.00	475.50	20 %
440 REPAIR AND MAINTENANCE SERVICE	322.48	3,741.41	3,250.00	3,250.00	-491.41	115 %
520 INSURANCE	0.00	0.00	5,800.00	5,800.00	5,800.00	0 %
540 ADVERTISING	0.00	0.00	350.00	350.00	350.00	0 %
582 TRAVEL OUT-OF-DISTRICT/INSERVI	0.00	70.74	250.00	250.00	179.26	28 %
610 SUPPLIES	9.81	102.95	100.00	100.00	-2.95	102 %
624 FUEL	0.00	778.07	3,900.00	3,900.00	3,121.93	19 %
660 MINOR EQUIPMENT	0.00	0.00	500.00	500.00	500.00	0 %
810 DUES AND FEES	0.00	68.00	200.00	200.00	132.00	34 %
<b>Function Total:</b>	<b>4,084.81</b>	<b>30,722.11</b>	<b>67,400.00</b>	<b>67,400.00</b>	<b>36,677.89</b>	<b>45 %</b>
2740 TRANSPORTATION SERVICING & MAIN						
582 TRAVEL OUT-OF-DISTRICT/INSERVI	0.00	0.00	350.00	350.00	350.00	0 %
610 SUPPLIES	0.00	87.23	216.00	216.00	128.77	40 %
<b>Function Total:</b>	<b>0.00</b>	<b>87.23</b>	<b>566.00</b>	<b>566.00</b>	<b>478.77</b>	<b>15 %</b>
<b>Program Total:</b>	<b>6,138.43</b>	<b>44,881.01</b>	<b>99,576.00</b>	<b>99,576.00</b>	<b>54,694.99</b>	<b>45 %</b>

01/13/17  
17:11:11

GALLATIN GATEWAY ELEMENTARY  
Statement of Expenditure - Budget vs. Actual Report  
For the Accounting Period: 1 / 17

Page: 7 of 17  
Report ID: B100

110 TRANSPORTATION

Program-Function-Object	Committed Current Month	Committed YTD	Original Appropriation	Current Appropriation	Available Appropriation	% Committed
100 ELEMENTARY						
110 TITLE I						
2600 OPERATIONS & MAINTENANCE						
433 CUSTODIAL SERVICES	576.00	2,304.00	0.00	0.00	-2,304.00	*** %
Function Total:	576.00	2,304.00	0.00	0.00	-2,304.00	*** %
Program Total:	576.00	2,304.00	0.00	0.00	-2,304.00	*** %
Program Group Total:	6,714.43	47,185.01	99,576.00	99,576.00	52,390.99	47 %
Fund Total:	6,714.43	47,185.01	99,576.00	99,576.00	52,390.99	47 %

01/13/17  
17:11:11

GALLATIN GATEWAY ELEMENTARY  
Statement of Expenditure - Budget vs. Actual Report  
For the Accounting Period: 1 / 17

Page: 8 of 17  
Report ID: B100

111 BUS DEPRECIATION

Program-Function-Object	Committed Current Month	Committed YTD	Original Appropriation	Current Appropriation	Available Appropriation	% Committed
100 ELEMENTARY						
100 ELEMENTARY						
2700 STUDENT TRANSPORTATION						
740 MAJOR EQUIPMENT REPLACEMENT	0.00	0.00	122,212.00	122,212.00	122,212.00	0 %
Function Total:	0.00	0.00	122,212.00	122,212.00	122,212.00	0 %
Program Total:	0.00	0.00	122,212.00	122,212.00	122,212.00	0 %
Program Group Total:	0.00	0.00	122,212.00	122,212.00	122,212.00	0 %
Fund Total:	0.00	0.00	122,212.00	122,212.00	122,212.00	0 %

01/13/17  
17:11:11

GALLATIN GATEWAY ELEMENTARY  
Statement of Expenditure - Budget vs. Actual Report  
For the Accounting Period: 1 / 17

Page: 9 of 17  
Report ID: B100

113 TUITION

Program-Function-Object	Committed Current Month	Committed YTD	Original Appropriation	Current Appropriation	Available Appropriation	% Committed
200						
280 SPECIAL EDUCATION						
1000 INSTRUCTION						
561 TUITION	0.00	0.00	856.00	856.00	856.00	0 %
<b>Function Total:</b>	<b>0.00</b>	<b>0.00</b>	<b>856.00</b>	<b>856.00</b>	<b>856.00</b>	<b>0 %</b>
<b>Program Total:</b>	<b>0.00</b>	<b>0.00</b>	<b>856.00</b>	<b>856.00</b>	<b>856.00</b>	<b>0 %</b>
<b>Program Group Total:</b>	<b>0.00</b>	<b>0.00</b>	<b>856.00</b>	<b>856.00</b>	<b>856.00</b>	<b>0 %</b>
<b>Fund Total:</b>	<b>0.00</b>	<b>0.00</b>	<b>856.00</b>	<b>856.00</b>	<b>856.00</b>	<b>0 %</b>

01/13/17  
17:11:11

GALLATIN GATEWAY ELEMENTARY  
Statement of Expenditure - Budget vs. Actual Report  
For the Accounting Period: 1 / 17

Page: 10 of 17  
Report ID: B100

114 RETIREMENT

Program-Function-Object	Committed Current Month	Committed YTD	Original Appropriation	Current Appropriation	Available Appropriation	% Committed
100 ELEMENTARY						
100 ELEMENTARY						
1000 INSTRUCTION						
210 SOCIAL SECURITY AND MEDICARE	3,036.91	15,195.13	49,000.00	49,000.00	33,804.87	31 %
220 TRS	3,532.66	17,523.94	51,000.00	51,000.00	33,476.06	34 %
240 UNEMPLOYMENT	210.66	1,065.92	3,800.00	3,800.00	2,734.08	28 %
<b>Function Total:</b>	<b>6,780.23</b>	<b>33,784.99</b>	<b>103,800.00</b>	<b>103,800.00</b>	<b>70,015.01</b>	<b>32 %</b>
2100 STUDENTS						
210-166 SOCIAL SECURITY AND MEDICARE NURSE	24.79	118.45	450.00	450.00	331.55	26 %
240-166 UNEMPLOYMENT NURSE	1.68	8.09	23.00	23.00	14.91	35 %
<b>Function Total:</b>	<b>26.47</b>	<b>126.54</b>	<b>473.00</b>	<b>473.00</b>	<b>346.46</b>	<b>26 %</b>
2111 SUPERVISION OF ATTENDANCE/SOCI						
210 SOCIAL SECURITY AND MEDICARE	4.77	33.65	75.00	75.00	41.35	44 %
220 TRS	6.02	42.13	105.00	105.00	62.87	40 %
240 UNEMPLOYMENT	0.35	2.56	5.00	5.00	2.44	51 %
<b>Function Total:</b>	<b>11.14</b>	<b>78.34</b>	<b>185.00</b>	<b>185.00</b>	<b>106.66</b>	<b>42 %</b>
2120 GUIDANCE PROGRAM						
210 SOCIAL SECURITY AND MEDICARE	137.03	686.41	2,100.00	2,100.00	1,413.59	32 %
220 TRS	162.98	814.90	2,400.00	2,400.00	1,585.10	33 %
240 UNEMPLOYMENT	9.66	48.86	165.00	165.00	116.14	29 %
<b>Function Total:</b>	<b>309.67</b>	<b>1,550.17</b>	<b>4,665.00</b>	<b>4,665.00</b>	<b>3,114.83</b>	<b>33 %</b>
2210 IMPROVEMENT OF INSTRUCTION SER						
210 SOCIAL SECURITY AND MEDICARE	19.18	135.17	275.00	275.00	139.83	49 %
220 TRS	24.09	168.62	315.00	315.00	146.38	53 %
240 UNEMPLOYMENT	1.43	10.25	18.00	18.00	7.75	56 %
<b>Function Total:</b>	<b>44.70</b>	<b>314.04</b>	<b>608.00</b>	<b>608.00</b>	<b>293.96</b>	<b>51 %</b>
2225 LIBRARY SERVICES						
210 SOCIAL SECURITY AND MEDICARE	123.92	620.05	2,000.00	2,000.00	1,379.95	31 %
220 TRS	145.35	726.74	1,850.00	1,850.00	1,123.26	39 %
240 UNEMPLOYMENT	8.62	43.60	109.00	109.00	65.40	40 %
<b>Function Total:</b>	<b>277.89</b>	<b>1,390.39</b>	<b>3,959.00</b>	<b>3,959.00</b>	<b>2,568.61</b>	<b>35 %</b>
2300 GENERAL ADMINISTRATION						
210 SOCIAL SECURITY AND MEDICARE	182.20	1,107.73	2,700.00	2,700.00	1,592.27	41 %
220 TRS	228.84	1,385.08	3,300.00	3,300.00	1,914.92	41 %
240 UNEMPLOYMENT	13.57	83.73	172.00	172.00	88.27	48 %
<b>Function Total:</b>	<b>424.61</b>	<b>2,576.54</b>	<b>6,172.00</b>	<b>6,172.00</b>	<b>3,595.46</b>	<b>41 %</b>
2400 SCHOOL ADMINISTRATION						
210 SOCIAL SECURITY AND MEDICARE	278.80	2,294.18	4,300.00	4,300.00	2,005.82	53 %
220 TRS	120.44	1,059.89	1,900.00	1,900.00	840.11	55 %
230 PERS	193.68	1,534.35	3,000.00	3,000.00	1,465.65	51 %
240 UNEMPLOYMENT	19.58	165.86	300.00	300.00	134.14	55 %
<b>Function Total:</b>	<b>612.50</b>	<b>5,054.28</b>	<b>9,500.00</b>	<b>9,500.00</b>	<b>4,445.72</b>	<b>53 %</b>
2500 BUSINESS SERVICES						
210 SOCIAL SECURITY AND MEDICARE	333.31	2,433.22	5,500.00	5,500.00	3,066.78	44 %
230 PERS	354.94	2,590.52	5,750.00	5,750.00	3,159.48	45 %
240 UNEMPLOYMENT	22.79	170.83	375.00	375.00	204.17	45 %
<b>Function Total:</b>	<b>711.04</b>	<b>5,194.57</b>	<b>11,625.00</b>	<b>11,625.00</b>	<b>6,430.43</b>	<b>44 %</b>



114 RETIREMENT

Program-Function-Object	Committed Current Month	Committed YTD	Original Appropriation	Current Appropriation	Available Appropriation	% Committed
100 ELEMENTARY						
100 ELEMENTARY						
2580 TECHNOLOGY COORDINATOR						
210 SOCIAL SECURITY AND MEDICARE	73.16	366.23	1,100.00	1,100.00	733.77	33 %
220 TRS	87.93	439.66	0.00	0.00	-439.66	*** %
240 UNEMPLOYMENT	5.21	26.36	85.00	85.00	58.64	31 %
<b>Function Total:</b>	<b>166.30</b>	<b>832.25</b>	<b>1,185.00</b>	<b>1,185.00</b>	<b>352.75</b>	<b>70 %</b>
2600 OPERATIONS & MAINTENANCE						
210 SOCIAL SECURITY AND MEDICARE	33.41	444.99	725.00	725.00	280.01	61 %
220 TRS	24.09	168.62	360.00	360.00	191.38	46 %
240 UNEMPLOYMENT	2.40	32.47	55.00	55.00	22.53	59 %
<b>Function Total:</b>	<b>59.90</b>	<b>646.08</b>	<b>1,140.00</b>	<b>1,140.00</b>	<b>493.92</b>	<b>56 %</b>
2700 STUDENT TRANSPORTATION						
210 SOCIAL SECURITY AND MEDICARE	253.96	1,755.29	4,000.00	4,000.00	2,244.71	43 %
220 TRS	150.55	1,053.87	2,300.00	2,300.00	1,246.13	45 %
230 PERS	89.07	598.52	2,325.00	2,325.00	1,726.48	25 %
240 UNEMPLOYMENT	18.04	126.61	275.00	275.00	148.39	46 %
<b>Function Total:</b>	<b>511.62</b>	<b>3,534.29</b>	<b>8,900.00</b>	<b>8,900.00</b>	<b>5,365.71</b>	<b>39 %</b>
<b>Program Total:</b>	<b>9,936.07</b>	<b>55,082.48</b>	<b>152,212.00</b>	<b>152,212.00</b>	<b>97,129.52</b>	<b>36 %</b>
<b>Program Group Total:</b>	<b>9,936.07</b>	<b>55,082.48</b>	<b>152,212.00</b>	<b>152,212.00</b>	<b>97,129.52</b>	<b>36 %</b>
200						
280 SPECIAL EDUCATION						
1000 INSTRUCTION						
210 SOCIAL SECURITY AND MEDICARE	356.40	1,820.24	4,100.00	4,100.00	2,279.76	44 %
220 TRS	410.77	2,093.31	4,907.00	4,907.00	2,813.69	42 %
240 UNEMPLOYMENT	24.35	125.29	325.00	325.00	199.71	38 %
<b>Function Total:</b>	<b>791.52</b>	<b>4,038.84</b>	<b>9,332.00</b>	<b>9,332.00</b>	<b>5,293.16</b>	<b>43 %</b>
2141 SUPERVISION OF PSYCHOLOGICAL S						
210 SOCIAL SECURITY AND MEDICARE	14.39	101.39	250.00	250.00	148.61	40 %
220 TRS	18.07	126.48	325.00	325.00	198.52	38 %
240 UNEMPLOYMENT	1.07	7.68	40.00	40.00	32.32	19 %
<b>Function Total:</b>	<b>33.53</b>	<b>235.55</b>	<b>615.00</b>	<b>615.00</b>	<b>379.45</b>	<b>38 %</b>
6200 RESOURCES TRANSFERED						
920 RESOURCES TRANSFER TO COOP	0.00	1,871.50	3,655.00	3,655.00	1,783.50	51 %
<b>Function Total:</b>	<b>0.00</b>	<b>1,871.50</b>	<b>3,655.00</b>	<b>3,655.00</b>	<b>1,783.50</b>	<b>51 %</b>
<b>Program Total:</b>	<b>825.05</b>	<b>6,145.89</b>	<b>13,602.00</b>	<b>13,602.00</b>	<b>7,456.11</b>	<b>45 %</b>
<b>Program Group Total:</b>	<b>825.05</b>	<b>6,145.89</b>	<b>13,602.00</b>	<b>13,602.00</b>	<b>7,456.11</b>	<b>45 %</b>
600						
610 ADULT CONTINUING EDUCATION PRO						
1000 INSTRUCTION						
210 SOCIAL SECURITY AND MEDICARE	14.23	80.99	350.00	350.00	269.01	23 %
220 TRS	17.35	98.80	6,000.00	6,000.00	5,901.20	1 %
240 UNEMPLOYMENT	1.03	5.96	25.00	25.00	19.04	23 %
<b>Function Total:</b>	<b>32.61</b>	<b>185.75</b>	<b>6,375.00</b>	<b>6,375.00</b>	<b>6,189.25</b>	<b>2 %</b>
<b>Program Total:</b>	<b>32.61</b>	<b>185.75</b>	<b>6,375.00</b>	<b>6,375.00</b>	<b>6,189.25</b>	<b>2 %</b>
<b>Program Group Total:</b>	<b>32.61</b>	<b>185.75</b>	<b>6,375.00</b>	<b>6,375.00</b>	<b>6,189.25</b>	<b>2 %</b>

01/13/17  
17:11:11

GALLATIN GATEWAY ELEMENTARY  
Statement of Expenditure - Budget vs. Actual Report  
For the Accounting Period: 1 / 17

Page: 12 of 17  
Report ID: B100

114 RETIREMENT

Program-Function-Object	Committed Current Month	Committed YTD	Original Appropriation	Current Appropriation	Available Appropriation	% Committed
700						
710 EXTRACURRICULAR PROGRAM						
2700 STUDENT TRANSPORTATION						
210-710 SOCIAL SECURITY AND MEDICARE FIELD TRIPS	0.00	13.71	0.00	0.00	-13.71	*** %
240-710 UNEMPLOYMENT FIELD TRIPS	0.00	0.93	0.00	0.00	-0.93	*** %
<b>Function Total:</b>	<b>0.00</b>	<b>14.64</b>	<b>0.00</b>	<b>0.00</b>	<b>-14.64</b>	<b>*** %</b>
3400 EXTRACURRICULAR ACTIVITIES						
210 SOCIAL SECURITY AND MEDICARE	0.00	70.97	1,900.00	1,900.00	1,829.03	3 %
240 UNEMPLOYMENT	0.00	5.07	88.00	88.00	82.93	5 %
<b>Function Total:</b>	<b>0.00</b>	<b>76.04</b>	<b>1,988.00</b>	<b>1,988.00</b>	<b>1,911.96</b>	<b>3 %</b>
<b>Program Total:</b>	<b>0.00</b>	<b>90.68</b>	<b>1,988.00</b>	<b>1,988.00</b>	<b>1,897.32</b>	<b>4 %</b>
720 ATHLETICS						
3500 EXTRACURRICULAR ATHLETICS						
210 SOCIAL SECURITY AND MEDICARE	13.31	473.81	750.00	750.00	276.19	63 %
220 TRS	6.02	42.15	175.00	175.00	132.85	24 %
240 UNEMPLOYMENT	0.97	32.93	38.00	38.00	5.07	86 %
<b>Function Total:</b>	<b>20.30</b>	<b>548.89</b>	<b>963.00</b>	<b>963.00</b>	<b>414.11</b>	<b>56 %</b>
<b>Program Total:</b>	<b>20.30</b>	<b>548.89</b>	<b>963.00</b>	<b>963.00</b>	<b>414.11</b>	<b>56 %</b>
<b>Program Group Total:</b>	<b>20.30</b>	<b>639.57</b>	<b>2,951.00</b>	<b>2,951.00</b>	<b>2,311.43</b>	<b>21 %</b>
900						
910 FOOD SERVICES						
3100 FOOD SERVICES						
210 SOCIAL SECURITY AND MEDICARE	204.69	1,306.81	5,300.00	5,300.00	3,993.19	24 %
220 TRS	18.07	126.48	300.00	300.00	173.52	42 %
230 PERS	201.50	1,331.94	5,100.00	5,100.00	3,768.06	26 %
240 UNEMPLOYMENT	14.01	90.25	325.00	325.00	234.75	27 %
<b>Function Total:</b>	<b>438.27</b>	<b>2,855.48</b>	<b>11,025.00</b>	<b>11,025.00</b>	<b>8,169.52</b>	<b>25 %</b>
<b>Program Total:</b>	<b>438.27</b>	<b>2,855.48</b>	<b>11,025.00</b>	<b>11,025.00</b>	<b>8,169.52</b>	<b>25 %</b>
<b>Program Group Total:</b>	<b>438.27</b>	<b>2,855.48</b>	<b>11,025.00</b>	<b>11,025.00</b>	<b>8,169.52</b>	<b>25 %</b>
<b>Fund Total:</b>	<b>11,252.30</b>	<b>64,909.17</b>	<b>186,165.00</b>	<b>186,165.00</b>	<b>121,255.83</b>	<b>34 %</b>

01/13/17  
17:11:11

GALLATIN GATEWAY ELEMENTARY  
Statement of Expenditure - Budget vs. Actual Report  
For the Accounting Period: 1 / 17

Page: 13 of 17  
Report ID: B100

117 ADULT EDUCATION FUND

Program-Function-Object	Committed Current Month	Committed YTD	Original Appropriation	Current Appropriation	Available Appropriation	% Committed
100 ELEMENTARY						
100 ELEMENTARY						
2300 GENERAL ADMINISTRATION						
530 COMMUNICATIONS- INTERNET SERVICE	26.06	406.19	1,350.00	1,350.00	943.81	30 %
<b>Function Total:</b>	<b>26.06</b>	<b>406.19</b>	<b>1,350.00</b>	<b>1,350.00</b>	<b>943.81</b>	<b>30 %</b>
<b>Program Total:</b>	<b>26.06</b>	<b>406.19</b>	<b>1,350.00</b>	<b>1,350.00</b>	<b>943.81</b>	<b>30 %</b>
<b>Program Group Total:</b>	<b>26.06</b>	<b>406.19</b>	<b>1,350.00</b>	<b>1,350.00</b>	<b>943.81</b>	<b>30 %</b>
600						
610 ADULT CONTINUING EDUCATION PRO						
1000 INSTRUCTION						
111 ADMINISTRATIVE SALARY	129.17	516.68	0.00	0.00	-516.68	*** %
112 CERTIFIED SALARIES	0.00	0.00	1,800.00	1,800.00	1,800.00	0 %
119 OTHER SUPERVISORY SALARIES	68.67	609.85	2,374.00	2,374.00	1,764.15	25 %
124 TEMPORARY- TECHNICAL- A/E INSTRUCTORS	0.00	0.00	5,000.00	5,000.00	5,000.00	0 %
250 WORKERS' COMPENSATION	1.16	6.59	15.00	15.00	8.41	43 %
260 HEALTH INS	21.24	115.51	350.00	350.00	234.49	33 %
610 SUPPLIES	260.00	260.00	1,000.00	1,000.00	740.00	26 %
660 MINOR EQUIPMENT	0.00	0.00	1,000.00	1,000.00	1,000.00	0 %
682 SUPPLIES- TECHNOLOGY	0.00	0.00	1,500.00	1,500.00	1,500.00	0 %
780 MAJOR TECHNOLOGY HARDWARE	0.00	0.00	6,611.00	6,611.00	6,611.00	0 %
<b>Function Total:</b>	<b>480.24</b>	<b>1,508.63</b>	<b>19,650.00</b>	<b>19,650.00</b>	<b>18,141.37</b>	<b>7 %</b>
<b>Program Total:</b>	<b>480.24</b>	<b>1,508.63</b>	<b>19,650.00</b>	<b>19,650.00</b>	<b>18,141.37</b>	<b>7 %</b>
<b>Program Group Total:</b>	<b>480.24</b>	<b>1,508.63</b>	<b>19,650.00</b>	<b>19,650.00</b>	<b>18,141.37</b>	<b>7 %</b>
<b>Fund Total:</b>	<b>506.30</b>	<b>1,914.82</b>	<b>21,000.00</b>	<b>21,000.00</b>	<b>19,085.18</b>	<b>9 %</b>

01/13/17  
17:11:11

GALLATIN GATEWAY ELEMENTARY  
Statement of Expenditure - Budget vs. Actual Report  
For the Accounting Period: 1 / 17

Page: 14 of 17  
Report ID: B100

128 TECHNOLOGY FUNDS

Program-Function-Object	Committed Current Month	Committed YTD	Original Appropriation	Current Appropriation	Available Appropriation	% Committed
100 ELEMENTARY						
100 ELEMENTARY						
1000 INSTRUCTION						
660 MINOR EQUIPMENT	0.00	793.93	1,000.00	1,000.00	206.07	79 %
680 COMPUTER SOFTWARE	0.00	300.00	350.00	350.00	50.00	85 %
682 SUPPLIES- TECHNOLOGY	0.00	255.34	200.00	200.00	-55.34	127 %
780 MAJOR TECHNOLOGY HARDWARE	0.00	1,597.94	2,576.00	2,576.00	978.06	62 %
<b>Function Total:</b>	<b>0.00</b>	<b>2,947.21</b>	<b>4,126.00</b>	<b>4,126.00</b>	<b>1,178.79</b>	<b>71 %</b>
2300 GENERAL ADMINISTRATION						
530 COMMUNICATIONS- INTERNET SERVICE	34.75	541.60	1,800.00	1,800.00	1,258.40	30 %
681 MAJOR COMPUTER SOFTWARE	0.00	315.00	1,000.00	1,000.00	685.00	31 %
<b>Function Total:</b>	<b>34.75</b>	<b>856.60</b>	<b>2,800.00</b>	<b>2,800.00</b>	<b>1,943.40</b>	<b>30 %</b>
2580 TECHNOLOGY COORDINATOR						
112 CERTIFIED SALARIES	1,002.65	5,013.25	12,032.00	12,032.00	7,018.75	41 %
250 WORKERS' COMPENSATION	5.87	29.25	75.00	75.00	45.75	39 %
260 HEALTH INS	117.16	571.15	1,307.00	1,307.00	735.85	43 %
<b>Function Total:</b>	<b>1,125.68</b>	<b>5,613.65</b>	<b>13,414.00</b>	<b>13,414.00</b>	<b>7,800.35</b>	<b>41 %</b>
<b>Program Total:</b>	<b>1,160.43</b>	<b>9,417.46</b>	<b>20,340.00</b>	<b>20,340.00</b>	<b>10,922.54</b>	<b>46 %</b>
<b>Program Group Total:</b>	<b>1,160.43</b>	<b>9,417.46</b>	<b>20,340.00</b>	<b>20,340.00</b>	<b>10,922.54</b>	<b>46 %</b>
<b>Fund Total:</b>	<b>1,160.43</b>	<b>9,417.46</b>	<b>20,340.00</b>	<b>20,340.00</b>	<b>10,922.54</b>	<b>46 %</b>

01/13/17  
17:11:11

GALLATIN GATEWAY ELEMENTARY  
Statement of Expenditure - Budget vs. Actual Report  
For the Accounting Period: 1 / 17

Page: 15 of 17  
Report ID: B100

129 FLEXIBILITY FUND

Program-Function-Object	Committed Current Month	Committed YTD	Original Appropriation	Current Appropriation	Available Appropriation	% Committed
100 ELEMENTARY						
100 ELEMENTARY						
1000 INSTRUCTION						
610 SUPPLIES	0.00	0.00	5,000.00	5,000.00	5,000.00	0 %
660 MINOR EQUIPMENT	0.00	0.00	4,313.00	4,313.00	4,313.00	0 %
<b>Function Total:</b>	<b>0.00</b>	<b>0.00</b>	<b>9,313.00</b>	<b>9,313.00</b>	<b>9,313.00</b>	<b>0 %</b>
<b>Program Total:</b>	<b>0.00</b>	<b>0.00</b>	<b>9,313.00</b>	<b>9,313.00</b>	<b>9,313.00</b>	<b>0 %</b>
<b>Program Group Total:</b>	<b>0.00</b>	<b>0.00</b>	<b>9,313.00</b>	<b>9,313.00</b>	<b>9,313.00</b>	<b>0 %</b>
<b>Fund Total:</b>	<b>0.00</b>	<b>0.00</b>	<b>9,313.00</b>	<b>9,313.00</b>	<b>9,313.00</b>	<b>0 %</b>

01/13/17  
17:11:11

GALLATIN GATEWAY ELEMENTARY  
Statement of Expenditure - Budget vs. Actual Report  
For the Accounting Period: 1 / 17

Page: 16 of 17  
Report ID: B100

150 DEBT SERVICE

Program-Function-Object	Committed Current Month	Committed YTD	Original Appropriation	Current Appropriation	Available Appropriation	% Committed
100 ELEMENTARY						
100 ELEMENTARY						
5100 DEBT SERVICE						
840 PRINCIPAL ON DEBT	0.00	0.00	100,000.00	100,000.00	100,000.00	0 %
850 INTEREST ON DEBT	0.00	8,082.50	16,165.00	16,165.00	8,082.50	50 %
860 AGENT FEES/ISSUANCE COSTS	0.00	350.00	350.00	350.00	0.00	100 %
<b>Function Total:</b>	<b>0.00</b>	<b>8,432.50</b>	<b>116,515.00</b>	<b>116,515.00</b>	<b>108,082.50</b>	<b>7 %</b>
<b>Program Total:</b>	<b>0.00</b>	<b>8,432.50</b>	<b>116,515.00</b>	<b>116,515.00</b>	<b>108,082.50</b>	<b>7 %</b>
<b>Program Group Total:</b>	<b>0.00</b>	<b>8,432.50</b>	<b>116,515.00</b>	<b>116,515.00</b>	<b>108,082.50</b>	<b>7 %</b>
<b>Fund Total:</b>	<b>0.00</b>	<b>8,432.50</b>	<b>116,515.00</b>	<b>116,515.00</b>	<b>108,082.50</b>	<b>7 %</b>

01/13/17  
 17:11:11

GALLATIN GATEWAY ELEMENTARY  
 Statement of Expenditure - Budget vs. Actual Report  
 For the Accounting Period: 1 / 17

Page: 17 of 17  
 Report ID: B100

161 BUILDING RESERVE

Program-Function-Object	Committed Current Month	Committed YTD	Original Appropriation	Current Appropriation	Available Appropriation	% Committed
100 ELEMENTARY						
100 ELEMENTARY						
2600 OPERATIONS & MAINTENANCE						
330-666 OTHER PROFESSIONAL SERVICES	0.00	14,730.00	15,000.00	15,000.00	270.00	98 %
School Security Transfer						
440 REPAIR AND MAINTENANCE SERVICE	0.00	7,479.74	58,208.00	58,208.00	50,728.26	12 %
660 MINOR EQUIPMENT	0.00	3,057.98	15,000.00	15,000.00	11,942.02	20 %
<b>Function Total:</b>	<b>0.00</b>	<b>25,267.72</b>	<b>88,208.00</b>	<b>88,208.00</b>	<b>62,940.28</b>	<b>28 %</b>
<b>Program Total:</b>	<b>0.00</b>	<b>25,267.72</b>	<b>88,208.00</b>	<b>88,208.00</b>	<b>62,940.28</b>	<b>28 %</b>
<b>Program Group Total:</b>	<b>0.00</b>	<b>25,267.72</b>	<b>88,208.00</b>	<b>88,208.00</b>	<b>62,940.28</b>	<b>28 %</b>
<b>Fund Total:</b>	<b>0.00</b>	<b>25,267.72</b>	<b>88,208.00</b>	<b>88,208.00</b>	<b>62,940.28</b>	<b>28 %</b>
<b>Grand Total:</b>	<b>110,112.70</b>	<b>641,551.24</b>	<b>1,874,314.00</b>	<b>1,865,939.00</b>	<b>1,224,387.76</b>	<b>34 %</b>



**GALLATIN GATEWAY SCHOOL  
PO BOX 265, GALLATIN GATEWAY, MT 59730**

**TO:** Gallatin Gateway School Board  
**FROM:** Carrie Fisher, Business Manager/District Clerk  
**DATE:** December 12, 2016  
**RE:** Cash Reconciliation as December 31, 2016

**Gallatin Gateway School District #35  
County Treasurer Cash vs Book Cash  
AS OF DECEMBER 31, 2016**

<u>Fund Name:</u>	<u>Fund #:</u>	<u>County Treasurer Cash:</u>	<u>Book Cash</u>	<u>Difference:</u>	
General	101	\$307,458.38	\$307,458.38	\$0.00	
Transportation	110	\$37,310.23	\$37,310.23	\$0.00	
Bus Depreciation	111	\$112,477.41	\$112,477.41	\$0.00	
Food	112	\$12,633.19	\$12,633.19	\$0.00	
Tuition	113	\$860.03	\$860.03	\$0.00	
Retirement	114	\$6,376.54	\$6,376.54	\$0.00	
Miscellaneous	115	\$43,762.69	\$43,762.69	\$0.00	
Adult Education	117	\$23,131.16	\$23,131.16	\$0.00	
Technology	128	\$4,999.87	\$4,999.87	\$0.00	
Flexibility	129	\$6,544.59	\$6,544.59	\$0.00	
Debt Service	150	\$60,918.66	\$69,001.16	-\$8,082.50	**
Building	160	\$2,042.18	\$2,042.18	\$0.00	
Building Reserve	161	\$48,450.91	\$48,450.91	\$0.00	
Endowment	181	\$1,440.59	\$1,440.59	\$0.00	
Payroll Clearing	186	-\$211.50	\$121.30	-\$332.80	***
Claims Clearing	187	\$41,554.02	\$33,138.72	\$8,415.30	****
<b>Total</b>		<b>\$709,748.95</b>	<b>\$709,748.95</b>	<b>\$0.00</b>	

\* Equals Outstanding Warrants.

\*\* Interfund transfer required-- bond payment transferred out twice

\*\*\* Interfund transfer required- BMO payment was coded to payroll vs claim by county

\*\*\*\* Interfund transfers above will correct this account difference



# 7790 Gallatin Gateway Elem.

## Operating (Inter Fund) Transfers

Date: 1/13/2017

**From:**

General Fund	7790	101	-000-00-61-00-855	
Transportation Fund	7790	110	-000-00-61-00-855	
Bus Depreciation	7790	111	-000-00-61-00-855	
Food Services Fund	7790	112	-000-00-61-00-855	
Tuition Fund	7790	113	-000-00-61-00-855	
Retirement Fund	7790	114	-000-00-61-00-855	
Misc/Federal Fund	7790	115	-000-00-61-00-855	
Technology Fund	7790	128	-000-00-61-00-855	
Flex Fund	7790	129	-000-00-61-00-855	
Investment Fund	7790	140	-000-00-61-00-855	
Debt Service	7790	150	-000-00-61-00-855	
Building Fund	7790	160	-000-00-61-00-855	
Building Reserve Fund	7790	161	-000-00-61-00-855	
Investments Fund	7790	162	-000-00-61-00-855	
Endowment Fund	7790	181	-000-00-61-00-855	
Student Activity Fund	7790	184	-000-00-61-00-855	
Payroll Clearing Fund	7790	186	-000-00-61-00-855	
Claims Clearing	7790	187	-000-00-61-00-855	\$8,415.30
		Total		\$8,415.30

**To:**

General Fund	7790	101	-000-00-53-00	
Transportation Fund	7790	110	-000-00-53-00	
Bus Depreciation	7790	111	-000-00-53-00	
Food Services Fund	7790	112	-000-00-53-00	
Tuition Fund	7790	113	-000-00-53-00	
Retirement Fund	7790	114	-000-00-53-00	
Misc/Federal Fund	7790	115	-000-00-53-00	
Adult Ed Fund	7790	117	-000-00-53-00	
Technology Fund	7790	128	-000-00-53-00	
Flex Fund	7790	129	-000-00-53-00	
Investment Fund	7790	140	-000-00-53-00	
Debt Service	7790	150	-000-00-53-00	\$8,082.50
Building Fund	7790	160	-000-00-53-00	
Building Reserve Fund	7790	161	-000-00-53-00	
Investments Fund	7790	162	-000-00-53-00	
Endowment Fund	7790	181	-000-00-53-00	
Student Activity Fund	7790	184	-000-00-53-00	
Payroll Clearing Fund	7790	186	-000-00-53-00	\$332.80
Claims Clearing Fund	7790	187	-000-00-53-00	\$0.00
		Total		\$8,415.30

# 2016-2017 Extra-Curricular Recap & Reconciliation

	Balance July 1, 2016	Revenues	Expenditures	Balance Before Transfers	Transfers In(Out)	Current Cash Balance	Non-Cash Balance	Total Account Balance
Class of 2016	\$1,769.20	\$730.80	\$0.00	\$2,500.00	(\$2,500.00)	\$0.00	\$0.00	\$0.00
Class of 2017	\$3,512.38	\$2,130.05	\$0.00	\$5,642.43	\$2,500.00	\$8,142.43	\$0.00	\$8,142.43
Class of 2018	\$2,568.19	\$608.70	\$0.00	\$3,176.89	\$0.00	\$3,176.89	\$0.00	\$3,176.89
Class of 2019	\$2,145.59	\$0.00	\$1,589.71	\$555.88	\$0.00	\$555.88	\$0.00	\$555.88
Class of 2020	\$2,234.29	\$0.00	\$0.00	\$2,234.29	\$0.00	\$2,234.29	\$0.00	\$2,234.29
Class of 2021	\$32.71	\$0.00	\$0.00	\$32.71	\$0.00	\$32.71	\$0.00	\$32.71
Class of 2022	\$0.00	\$0.00	\$0.00	\$0.00	\$0.00	\$0.00	\$0.00	\$0.00
Miscellaneous	\$61.75	\$0.00	\$100.00	-\$38.25	\$0.00	(\$38.25)	\$0.00	(\$38.25)
Student Council	\$375.14	\$0.00	\$0.00	\$375.14	\$0.00	\$375.14	\$0.00	\$375.14
	<u>\$12,699.25</u>	<u>\$3,469.55</u>	<u>\$1,689.71</u>	<u>\$14,479.09</u>	<u>\$0.00</u>	<u>\$14,479.09</u>	<u>\$0.00</u>	<u>\$14,479.09</u>

Balance as of:  
December 31, 2016

  
DISTRICT CLERK CARRIE FISHER

January/February - as of January 13, 2017  
Certified/Classified Substitute Recommendations:

---

**Bus Driver**

Maxine Daniel

Gary Jones

**Kitchen/Food Service**

Stacy Webb (Roscoe)

Connie Evenson

**Teachers/Aides/Other**

Shelly Berezay

April Bettilyon

Zoe Brown

Cynthia Corliss

Megan Costle

Kate Cottingham

Sonja Davis

Priscilla Dolan

Jonathan Gans

Jennifer Gilbert

Lauren Hausauer

Wendy Hourigan

Sunny Jaye

Helen Ketcher

Spencer Kirkemo

Patrick Lupton

Heather Maxcy

Libby Michaud

Darcy Nordhagen

Brad Parsch

Teresa Ann Quatraro

Ashley Senenfelder

Megan Stark

Barry Sulam

Leeann Swain

**Office/Clerical**

Connie Evenson

*\*All substitute hires are pending an adequate finger print background check and TB test results.*

# Agenda Item: Bus Replacement Update- Trade-In

---

## Background:

At a regular meeting December 12, 2016 the Board made a motion to purchase a new diesel bluebird bus from Hartley's School Buses, Inc. The Business Manager would explore values of the trade-in and get final values for the next meeting.

The District received quotes from:

1. Harlow's Bus Sales, Inc- International Buses
2. Hartley's School Buses, Inc- Bluebird Buses
3. i-State Truck Center- Thomas Built Buses

This district also explored the idea of purchasing buses with alternative fuel, but there is currently no grant funding available to supplement the cost. There may be funding in future years and could be something the district chooses to explore at a later time.

**Funding-** the current Bus Depreciation budget is \$122,211.78.

## What has changed since December 2016?

1. Harlow's Bus Sales, Inc- submitted an updated bid and increased the trade-in value from \$20,500 to \$30,000. Final sales price would be: \$66,135.47 (with trade)
2. Hartley's School Buses, Inc- submitted an updated bid and increase the trade-in value from \$20,500 to \$28,500. Final sales price would be: \$67,300 (with trade)

## Recommendation

Continue with the purchase of the new diesel Bluebird bus from Hartley's Bus Sales Inc. with the new purchase price and trade-in 2011 International Bus with VIN #4DRBUAAP7BB259084.

## Recommended Motion:

To trade-in the 2011 International Bus with VIN #4DRBUAAP7BB25908 to Hartley's Bus Sales Inc for \$28,500 which would be applied to the final purchase price of a new Bluebird diesel bus.



# **INTEGRATED CE S BUS**

**Sales Proposal For:**

**Gallatin Gateway School**

**Presented By:**

**HARLOW'S BUS SALES, INC**

**Vehicle Specifications**  
**2018 INTEGRATED CE S BUS (PB105)**

**December 29, 2016**

<u>Code</u>	<u>Description</u>
PB10500	Base Chassis, Model INTEGRATED CE S BUS with 276.00 Wheelbase, N/A CA, and 148.00 Axle to Frame.
1570	TOW HOOK, FRONT (2) Frame Mounted
1CAC	FRAME RAILS High Strength Low Alloy Steel (50,000 PSI Yield); 10.125" x 3.062" x 0.312" (257.2mm x 77.8mm x 8.0mm); 480.1" (12195mm) Maximum OAL  <u>Includes</u> : CHASSIS PAINT Chassis Painted Prior to Body Mounting : FRAME RAILS All holes Laser Aligned and Machine Punched, Powder Coated Prior to Full Assembly, Assembled in Fixture using "Grade 8" Bolts : FRAME REINFORCEMENT, SPECIAL 3.30" x 1.80" x 0.312" x 31.50" Inverted "L" in Front Shock Absorber Mounting Area
1LLE	BUMPER, FRONT Full Width, Aerodynamic, Heavy Duty, Steel  <u>Includes</u> : BUMPER, FRONT THICKNESS 1/4 Inch
1LMW	CROSSING GATE, FRONT Electric, Yellow Blade, Bumper Mounted  <u>Includes</u> : CONTROL ASSEMBLY Solid State, Located Rear of Front Bumper, Heater not Required : CROSSING GATE, FRONT Matches Contour of Bumper
1SAM	CROSSMEMBER, REAR, AF (2)
1WJE	WHEELBASE RANGE 276" (700cm) Only
2ASH	AXLE, FRONT NON-DRIVING {Meritor MFS-10-122A} I-Beam Type, 10,000-lb Capacity  <u>Includes</u> : AXLE, FRONT SQUARING to Plus or Minus .015 Inch, using a Special Fixture to Assure Parallelism of Springs  <u>Notes</u> : The following features should be considered when calculating Front GAWR: Front Axles; Front Suspension; Brake System; Brakes, Front Air Cam; Wheels; Tires.
3ADB	SUSPENSION, FRONT, SPRING Parabolic, Taper Leaf; 10,000-lb Capacity; With Shock Absorbers  <u>Includes</u> : SPRING PINS Bolt and Nut Type : SPRING PINS Rubber Bushings, Maintenance-Free  <u>Notes</u> : The following features should be considered when calculating Front GAWR: Front Axles; Front Suspension; Brake System; Brakes, Front Air Cam; Wheels; Tires.
4085	BRAKE SYSTEM, HYDRAULIC {Meritor Wabco} Split System, Full Power, With Automatic Adjustment And With Four Channel ABS  <u>Includes</u> : DUST SHIELDS, FRONT BRAKE : DUST SHIELDS, REAR BRAKE
4GAW	BRAKE, PARKING {Bosch} DSSA Drum Type; 12" x 3", Spring Actuated; for Hydraulic Brake Chassis; Activated by Parking Brake Knob on Instrument Panel; With Key Switch Interlock, Park Brake Cannot be released Until Ignition Switch is in "On" Position; Differential Mounted  <u>Includes</u> : PARKING BRAKE CONTROL Applies Hydraulic Actuated Powered Park Brake
4JNG	TRACTION CONTROL, HYDRAULIC Automatic; With Full Power Hydraulic Brake System
4JNP	BRAKES, FRONT, HYDRAULIC DISC Quadraulic; Four 70mm Diameter Pistons

**Vehicle Specifications**  
**2018 INTEGRATED CE S BUS (PB105)**

December 29, 2016

<u>Code</u>	<u>Description</u>
4NNL	BRAKES, REAR, HYDRAULIC DISC Quadraulic; Four 70mm Diameter Pistons
4WXP	GVWR LIMITATION FOR BUS With Hydraulic Brakes, Limited to 29,800-lbs Maximum to meet FMVSS 105 Requirements, for Conventional Bus
5708	STEERING COLUMN Tilting
5CAL	STEERING WHEEL 2-Spoke, 18" Dia., Black
5PRR	STEERING GEAR {TRW (Ross) TAS66} Power
7BLA	EXHAUST SYSTEM Single, Horizontal Aftertreatment Device, Frame Mounted Under Right Rail, for Long Horizontal Tail Pipe
	<u>Includes</u> : NOTE: The Horizontal Tailpipe Includes a Temperature Control Device
7WBL	TAIL PIPE Long Horizontal, Exits Left Side Through Bumper
8000	ELECTRICAL SYSTEM 12-Volt, Standard Equipment
	<u>Includes</u> : FUSES, ELECTRICAL SAE Blade-Type : HAZARD SWITCH Push On/Push Off, Located on Top of Steering Column Cover : HEADLIGHT DIMMER SWITCH Integral with Turn Signal Lever : MISCELLANEOUS FEATURES Modular, Loom Protected, Grommets in all Applicable Body Openings, Assembled in Computer Assisted Fixture which Verifies Continuity and Correct Assembly Prior to Installation : PARKING LIGHT Integral with Front Turn Signal and Rear Tail Light : STARTER SWITCH Electric, Key Operated : TURN SIGNAL FLASHER : TURN SIGNAL SWITCH Self-Cancelling with Lane Change Feature : TURN SIGNALS, FRONT Includes Reflectors; Flush Mounted : WINDSHIELD WIPER SWITCH 2-Speed with Wash and Intermittent Feature (5 Pre-Set Delays), Integral with Turn Signal Lever : WIRING, CHASSIS Color Coded and Continuously Numbered
8GHV	ALTERNATOR {Delco Remy 28SI} Brush Type, 12 Volt 200 Amp. Capacity, Pad Mount
8MEZ	BATTERY SYSTEM {International} Maintenance-Free, (2) 12-Volt 1850CCA Total
8TTK	BATTERY BOX Steel, With Sliding Tray, 25.25" Wide, for Standard Batteries, Mounted Left Side Behind Front Axle Perpendicular to Frame Rail
8VAZ	HORN, ELECTRIC (2) Trumpet Style, Mounted on Top of Mega-Bracket
8WPB	HEADLIGHTS Halogen; Composite Aero Design for Two Light System; Includes Daytime Running Lights
8WTK	STARTING MOTOR {Delco Remy 38MT Type 300} 12 Volt; less Thermal Over-Crank Protection
8WWJ	INDICATOR, LOW COOLANT LEVEL With Audible Alarm
8WXB	HEADLIGHT WARNING BUZZER Sounds When Head Light Switch is on and Ignition Switch is in "Off" Position
8XAH	CIRCUIT BREAKERS Manual-Reset (Main Panel) SAE Type III With Trip Indicators, Replaces All Fuses Except For 5-Amp Fuses
9WAB	HOOD TILT ASSIST {EASY TILT} Mechanical
9WAY	FRONT END Tilting, Fiberglass, With Three Piece Construction
	<u>Includes</u> : AIR INTAKE SYSTEM Integrated Pre-Cleaning System to Enhance Air Filter Life : GRILLE Removable; Fiberglass Painted Hood Color : SPLASH SHIELD Integral with Front End Assembly
10020	CHASSIS PAINT Full Chassis

**Vehicle Specifications**  
**2018 INTEGRATED CE S BUS (PB105)**

December 29, 2016

<u>Code</u>	<u>Description</u>
10060	PAINT SCHEMATIC, PT-1 Single Color, Design 100  <u>Includes</u> : PAINT SCHEMATIC ID LETTERS "NB"
10788	PAINT TYPE Urethane, One or Two Colors, Other than Imron or International.
10AA Y	OVER THE AIR PROGRAMMING for Cummins Engines
10XAK	PROMOTIONAL PACKAGE 7 Year Unlimited Miles/km Warranty, Limited Time Program for Allison 2000 Series Transmission on School and Commercial Buses (Supplied directly through Allison)
11001	CLUTCH Omit Item (Clutch & Control)
12703	ANTI-FREEZE Red, Extended Life Coolant; To -40 Degrees F/ -40 Degrees C, Freeze Protection
12EJ J	ENGINE, DIESEL {Cummins B6.7 220} EPA 2017, 220 HP @ 2400 RPM, 520 lb-ft Torque @ 1600 RPM, 2600 RPM Governed Speed, 220 Peak HP (Max) School Bus Only  <u>Includes</u> : FUEL FILTER Included with Cummins ISB/B6.7 Engines Engine Mounted : FUEL/WATER SEPARATOR Fuel/Water Separator; Heated; with Water-in-Fuel Sensor. Engine Mounted
- 12TSY	FAN DRIVE {Borg-Warner SA85} Viscous Type, Screw On  <u>Includes</u> : FAN Nylon
12UGN	THROTTLE, HAND CONTROL Electronic  <u>Notes</u> : Cruise Control Switches Mounted on Steering Wheel are Non-Illuminated.
12UYE	RADIATOR Aluminum; 2-Row, Cross Flow, Over Under System, 717 SqIn Louvered, With 313 SqIn Charge Air Cooler. With In-Tank Transmission Cooler  <u>Includes</u> : DEAERATION SYSTEM with Surge Tank : HOSE CLAMPS, RADIATOR HOSES Gates Shrink Band Type; Thermoplastic Coolant Hose Clamps : RADIATOR HOSES Premium, Rubber
12VBR	AIR CLEANER With Service Protection Element  <u>Includes</u> : GAUGE, AIR CLEANER RESTRICTION Air Cleaner Mounted
12VVN	CRUISE CONTROL Electronic  <u>Notes</u> : Cruise Control Switches Mounted on Steering Wheel are Non-Illuminated.
12VWH	GOVERNOR Electronic Road Speed Type; for Electronic Engines and Bus Models; With 55 MPH Default
12WAE	HOSE CLAMPS, RADIATOR HOSES Constant Torque, for Engine Hoses 1.0" I.D. and Over
12WUL	BLOCK HEATER, ENGINE {Phillips} 120V/1000W, With "Y" Cord From Socket in Standard Location, For a Dealer Installed 120V/300W Max Oil Pan Heater
12WZE	EMISSION COMPLIANCE Federal, Does Not Comply With California Clean Air Idle Regulations
12XZE	FEDERAL EMISSIONS {Cummins B6.7} EPA, OBD and GHG Certified for Calendar Year 2017
13ART	TRANSMISSION, AUTOMATIC {Allison 2500_PTS} 5th Generation Controls; Wide Ratio, 5-Speed, With Overdrive; Less PTO Provision, Less Retarder, With 33,000-lb GVW & GCW Max. School Bus  <u>Includes</u> : OIL FILTER, TRANSMISSION Mounted on Transmission



**Vehicle Specifications**  
**2018 INTEGRATED CE S BUS (PB105)**

December 29, 2016

<u>Code</u>	<u>Description</u>
	: TRANSMISSION OIL PAN Magnet in Oil Pan
13WLN	TRANSMISSION OIL Synthetic; 20 thru 28 Pints
13WYY	SHIFT CONTROL PARAMETERS Allison 1000 or 2000 Series Transmissions, 5th Generation Controls, Performance Programming
14AGM	AXLE, REAR, SINGLE {Dana Spicer 19060S} Single Reduction, 19,800-lb Capacity, 190 Wheel Ends . Gear Ratio: 5.29
	<u>Includes</u> : REAR AXLE DRAIN PLUG (1) Magnetic, For Single Rear Axle
	<u>Notes</u> : The following features should be considered when calculating Rear GAWR: Rear Axles; Rear Suspension; Brake System; Brakes, Rear Air Cam; Brake Shoes, Rear; Special Rating, GAWR; Wheels; Tires. : When Specifying Axle Ratio, Check Performance Guidelines and TCAPE for Startability and Performance
14SBK	SUSPENSION, RR, SPRING, SINGLE Two Stage, Vari-Rate; 19,800-lb Capacity
	<u>Notes</u> : The following features should be considered when calculating Rear GAWR: Rear Axles; Rear Suspension; Brake System; Brakes, Rear Air Cam; Brake Shoes, Rear; Special Rating, GAWR; Wheels; Tires.
14WAP	SHOCK ABSORBERS, REAR (2)
15SBZ	FUEL TANK Top Draw; Rectangular, Steel; 65 U.S. Gal., 246 L Capacity, Includes Protective Cage and with Fuel Filler Assembly and Vent Hosing, Mounted Between Frame Sidemembers and Behind Rear Axle
	<u>Notes</u> : Requires 217" WB Minimum
15WDT	DEF TANK 12 U.S. Gal. 45.4L Capacity, Frame Mounted Outside Right Rail, Behind 0 Bow
16010	COWL Flat Back
16HBA	GAUGE CLUSTER English With English Electronic Speedometer
	<u>Includes</u> : GAUGE CLUSTER (5) Engine Oil Pressure (Electronic), Water Temperature (Electronic), Fuel (Electronic), Tachometer (Electronic), Voltmeter : ODOMETER DISPLAY, Miles, Trip Miles, Engine Hours, Trip Hours, Fault Code Readout : WARNING SYSTEM Low Fuel, Low Oil Pressure, High Engine Coolant Temp, and Low Battery Voltage (Visual and Audible)
16HGH	GAUGE, OIL TEMP, AUTO TRANS , for Allison Transmission
16HKT	IP CLUSTER DISPLAY On Board Diagnostics Display of Fault Codes in Gauge Cluster
16HLJ	GAUGE, DEF FLUID LEVEL
27DTU	WHEELS, FRONT {Accuride 29001} DISC; 22.5x7.50 Rims, Powder Coat Steel, 5-Hand Hole, 10-Stud, 285.75mm BC, Hub-Piloted, Flanged Nut, with Steel Hubs
28DTU	WHEELS, REAR {Accuride 29001} DUAL DISC; 22.5x7.50 Rims, Powder Coat Steel, 5-Hand Hole, 10-Stud, 285.75mm BC, Hub-Piloted, Flanged Nut, with Steel Hubs
29596	WHEEL SEALS, FRONT {Stemco Voyager} Oil Lubricated Wheel Bearings ILO Standard Grease Seals
29597	WHEEL SEALS, REAR {Stemco Voyager} Oil Lubricated Wheel Bearings
47AGJ	BODY, BUS Conventional; 78" Headroom, 33'5" Body Length, +9 Section Front and Rear, 72 Passenger, 276 WB
47AJB	BODY CERTIFICATION TAG Mylar Label

**Vehicle Specifications**  
**2018 INTEGRATED CE S BUS (PB105)**

December 29, 2016

<b>Code</b>	<b>Description</b>
47AJC	BODY TAG, METAL Capacity to Include the Total Number of Passengers
47AJW	STEP, FRONT ENTRANCE DOOR 27 1/4" Depth; 14ga Steel  <u>Includes</u> : STEP, FRONT ENTRANCE DOOR OPENING, 35 Inch Width; Continuous Bottom to Top
47APR	HEADLINER, BODY Conventional; 25'11"-34'11" Body Length, Perforated Full Length With Sound Insulation Full Length
47APX	FASTENERS, HEADLINER Screws
47ARH	BOWS, ROOF 14 ga., One Piece Construction  <u>Includes</u> : BOWS, ROOF Positioned Floor Line to Floor Line, Threaded Through Roof Strainers and Drip Rail
47ARP	LIGHT BARS Plastic
47ATB	SKIRT, BODY Conventional, 20", 16ga., 31'2", 31'11", 32'8", 33'5", 34'2", 34'11", Body Length  <u>Includes</u> : SKIRT, BODY Extra Smooth Steel Supported by Floor Gussets
47AUR	TIE DOWNS, BODY Grade 8 Bolts, Every Body Section  <u>Includes</u> : TIE DOWNS, BODY with Formed Tab that Fits into Floor Structure to Prevent Turning
47AXT	RUB RAILS, BODY (4) Conventional; Steel, 31'2", 31'11", 32'8", 33'5", 34'2", 34'11", Body Length, Includes Snow Rail  <u>Includes</u> : RUB RAILS Full Length, Primer Coated (Both Sides), Attached to Body without Cuts or Splices
47AYB	BODY, REAR Includes Emergency Door  <u>Includes</u> : DOOR, REAR EMERGENCY with Concealed Hinges : HEADER BUMPER Padded, Mounted Over Rear Door; Upholstered to Match Passenger Seat Color
47AZE	SIDE SHEET, BODY, EXTERIOR Conventional, 16ga., Smooth, 31'2", 31'11", 32'8", 33'5", 34'2", 34'11", Body Length
47AZL	FLOOR, BODY With Wheel Wells
47BAR	SUPPORTS, REAR BUMPER Bolted to Frame
47BAU	BUMPER, REAR Painted; 12" High, 3/16" Thick, With 7" Hole for Exhaust
47BAW	TOW HOOK, LEFT REAR (01)
47BAX	TOW HOOK, RIGHT REAR (01)
47BBH	LINING, SIDE INTERIOR, LOWER Embossed Steel, Clear Coated
47BBZ	SEALER Extra; Sidewall to Floor, In Wheel Pocket Area, and Rear Wall to Floor
47DAE	FASTENERS, REAR DOOR Lag Screws, Rear Door To Body
47DAJ	COVER, REAR DOOR INSIDE HANDLE Partial Coverage
47DBZ	GLASS GUARD Inside Back-up, In Lower Section of Rear Door
47DDE	HANDLE, ASSIST, ENTRANCE DOOR Outside Entrance
47DDH	HOLD BACK, REAR DOOR Stationary, No Cables, With Plastic Cover

**Vehicle Specifications**  
**2018 INTEGRATED CE S BUS (PB105)**

December 29, 2016

<u>Code</u>	<u>Description</u>
47DDU	LATCH, REAR DOOR One Point Slide Bar, Cam Operated, with One Inch Stroke
47DEK	LOCK, VANDAL, REAR DOOR with Ignition Starter Interlock
47DEY	HANDLE, EXTERIOR, REAR Emergency Door; Yellow
47DNB	DOOR, ENTRANCE, FRONT Electric, Outward Opening, with Split Pane Glass  <u>Includes</u> : DOOR, ENTRANCE, FRONT Aluminum Frame with Pin Style Hinges, Ball Bearing Assisted, Interchangeable Top and Bottom Glass : LOCK, VANDAL, ENTRANCE DOOR With Key Switch
47DNP	SWITCH, LOCATION Left of Driver; Includes Master, Amber Flasher, Red Override, and 2 Position Door Control
47EBM	HOLD DOWN, BATTERY For (2) Standard Size Batteries
47KDC	MONITOR, POST TRIP INSPECTION {Leave No Student Behind} Accessory Controlled, With Push Button Alarm Disable at Rear of Bus Prompts Driver to Walk to Back of Bus and Push Button in Light Bar to Deactivate System
47LAB	NOISE REDUCTION, DRIVER FLOOR Insulation Covering Complete Driver Floor Area
47LAT	NOISE REDUCTION, ROOF BOW Conventional; Insulation, 31'2", 31'11", 32'8", 33'5", 34'2", 34'11", Body Lengths
47LAU	INSULATION, ROOF AND SIDES 1.50", All Models
47MAC	UNDERCOAT, FLOOR/STEPWLL/SIDES for Engine Noise Reduction
47MBA	UNDERCOAT, BODY Fire Resistant, Water Based, TT-C-730 Spec  <u>Includes</u> : UNDERCOATING Performed Before and After Mounting on Chassis
47MBC	INSULATION, STEPWELL
47MJR	LETTERS, DOOR, REAR Decals; "EMERGENCY DOOR", 2" Black Letters Inside and Outside
47MPE	LETTERS, SCHOOL BUS FRONT/REAR Decal; "SCHOOL BUS", With 8" Black Reflective Letters, Diamond Grade, On Front and Rear Cap
47MRN	STRIPING, E/E WINDOW, LEFT (02) Perimeter, Reflexite V82
47MRU	LETTERS, E/E WINDOW, LEFT (2) Decal Sets, "EMERGENCY EXIT", Black Inside and Outside
47MSA	STRIPING, PERIMETER, REAR Emergency Door; Reflective, Yellow
47MSJ	STRIPING, ROOF HATCH, FRONT Yellow Decal, Perimeter, Reflexite
47MSK	STRIPING, ROOF HATCH, REAR Yellow Decal, Perimeter, Reflexite
47MTY	WIRING DIAGRAM Schematic, Electrical  <u>Includes</u> : ACCESS PANEL for Wiring Diagram Schematic Located on Body Exterior; Below Driver Window
47MUP	STRIPING, E/E WINDOW, RIGHT (02) Perimeter, Reflexite V82
47MVA	LETTERS, HEADER Decal; "WATCH YOUR STEP", 1" Black, Above Windshield
47MVC	LETTERS, STEPWELL Decal, "WATCH YOUR STEP", 2.5" Black, Behind Door on Step Riser
47NAB	PAINT COLOR, RUB RAILS 0001 Canyon Black
47NGG	LETTERS, CAPACITY 2" Black Decals, (2) Places, Aft of Entry Door and Inside Above Right Side Windshield, for State of South Dakota

**Vehicle Specifications**  
**2018 INTEGRATED CE S BUS (PB105)**

December 29, 2016

<b>Code</b>	<b>Description</b>
47NGW	SEAL, RUB RAILS Top Edge, All Rails
47NHL	LETTERS, E/E WINDOW, RIGHT (2) Decal Sets, "EMERGENCY EXIT", Black, Inside and Outside
47NJA	PAINT COLOR, BODY EXTERIOR 4421 Yellow, SBNS
47NJM	PAINT FLASHER BACKGRD 0001 Canyon Black
47NJS	PAINT COLOR, BUMPER Rear; 0001 Canyon Black
47NKL	PAINT, RUB RAIL Flange to Flange
47NKM	PAINT COLOR, BODY INTERIOR 9384 Spring White
47NMG	OPERATING INSTR, REAR Decal, Inside Rear Emergency Door
47NTE	LOGO, ROOF LINE Decal; Wing and Shield, First Body Section, Above Driver Window and Entrance Door Over Driver Window and Entrance Door
47NTY	PAINT HOOD AND FENDER To Match Body Exterior
47PBZ	HANDLE, ASSIST Windshield Side Mounted, Left and Right, Body Color
47PLX	LETTERS, DEF, I.D. Decal; "DEF ONLY", 1" Black, on DEF Filler Door
47SBS	SUB FLOOR, PLYWOOD Conventional; B-C Exterior Grade, Less Sealed Edges, 5/8", 5 Ply, for 31'2",31'11", 32'8",33'5", 34'2", 34'11", Body Length
48AAB	WINDOW, STORM LT 1ST Position Aft Driver
48ABB	WINDOW, STORM RT 1ST Position Aft Entrance Door
48ACN	SEAT BELT, DRIVER, COLOR With Blaze Orange Seat Belt Webbing
48ANW	WINDOW, DRIVER Storm
48APL	WINDOW, STOPS 12" Opening, Only With 78" Headroom
48APV	WINDOW, ENTRANCE DOOR, BOTTOM Storm, Laminated, Clear
48APW	WINDOW, ENTRANCE DOOR, TOP Storm, Laminated, Clear
48ARP	WINDOW, SASH (16) 27" Sections, 9"x 23" Opening
48ASP	WINDOW, SASH +9 SECTIONS (2) 9" x 32 1/4" Opening
48BAH	WINDOW, E/E, LEFT (2) Vertical Hinge
48BEN	SHOULDER RAILS, PADDED Conventional Bus; With 31'2", 31'11", 32'8", 33'5", 34'2", 34'11", Body Length
48BJA	COLOR, WINDOW FRAME, PASS Passenger Window, Natural Aluminum Finish
48BKP	WINDOW, E/E, RIGHT (2) Vertical Hinge
48BUB	WINDOW, PASSENGER, TINT Conventional; 28% Light, Tempered Glass, 78" Headroom, With 34'11", 31'2", 31'11", 32'8", 33'5", 34'2" Body Lengths
48GHC	HEATER, DRIVER 90,000 BTU, with Defroster and Without Rear Heat Duct <u>Includes</u> : AIR FILTER : HEATER HOSES Premium : HOSE CLAMPS, HEATER HOSE Mubea Constant Tension Clamps
48PAM	WINDSHIELD 3 Flat Pieces, 73% Light, With Band
48PAV	WHEEL POCKET COVER Plastic, ABS
48PAY	AISLE POSITION Center, for balanced seating

**Vehicle Specifications**  
**2018 INTEGRATED CE S BUS (PB105)**

December 29, 2016

<b><u>Code</u></b>	<b><u>Description</u></b>
48PBC	FLOOR COVERING, COLOR Blue
48PHP	UPHOLSTERY, PASS SEATS, TYPE Prevaill, 42 oz.; for (23-24) Seats
48PJR	FLOOR COVERING, TRIM Aluminum
48PJZ	FLOOR COVERING, TYPE {Koroseal} All Body Lengths
48PKC	HOSE CLAMPS, HEATER HOSE Constant Torque for Heater System
48PKN	FAN, DEFOG FAR RIGHT (01) Black, Mounted Right Above Windshield, Forward Entrance Door, 2-Speed Switch in Panel
48PKR	FAN, DEFOG LEFT CENTER 6.50" Diam., Black, Mounted Left of Center Post, 2-Speed Switch in Panel
48PMD	HEATER, PASS, LT MIDSHIP 1ST 84,500 BTU  <u>Includes</u> : AIR FILTER
48PMJ	HEATER, PASS, LT REAR 84,500 BTU  <u>Includes</u> : AIR FILTER
48PMS	HEATER, STEPWELL 50,000 BTU  <u>Includes</u> : AIR FILTER
48PNW	HEATER, WATER PUMP {2MPU 12} Self Priming, With Plastic Housing
48PPB	SWITCH, HTR FAN, MID, LT 1ST With 84,500 BTU Heater Only
48PPC	SWITCH, HTR FAN, REAR, LT With 84,500 BTU Rear Heater Only
48PPM	HEATER CUT OFF, VALVE Ball, With Butterfly Handle
48PPS	ROOF VENT, FRONT Static
48PTT	ARM REST, DRIVER, RIGHT {National}
48PUT	NUTS, BELT MOUNTING Standard Nuts For Seat Belt Mounting
48PVA	UPHOLSTERY, DRIVER SEAT, STYLE Plain, With Cloth Insert
48PVM	UPHOLSTERY, DRIVER SEAT, COLOR Drivers Seat, Blue
48PWC	UPHOLSTERY, PASS SEATS, COLOR Blue, for Seats, Barriers and Head Bumpers
48PWR	UPHOLSTERY, DRIVER SEAT, TYPE Prevail, 42 oz.
48PXP	UPHOLSTERY, BARRIER, TYPE (1-2) Prevaill, 42 oz.
48PZP	ROOF HATCH, FRONT {Specialty 9245-0200} Emergency Exit With Alarm
48PZR	ROOF HATCH, REAR {Specialty 9245-0200} Emergency Exit With Alarm
48RAE	BARRIER, CRASH, AFT ENTRY DOOR 39", 1 Leg
48RAL	BARRIER, CRASH, AFT DRIVER 39", 1 Leg
48REP	PANEL, MODESTY, AFT OF DRIVER Mounted Under Barrier
48RGR	HAND RAIL, ENTRANCE DOOR, AFT Stainless Steel, 4", Above Step
48RLX	CUSHION, SEAT 15" Depth  <u>Includes</u>

**Vehicle Specifications**  
**2018 INTEGRATED CE S BUS (PB105)**

December 29, 2016

<u>Code</u>	<u>Description</u>
	: WARRANTY Four Years
48RRA	UPHOLSTERY, SEAT, STITCHING Single
	<u>Includes</u>
	: WARRANTY Two Years
48RYV	SEAT, DRIVER {National 2000SC} Self Contained with Compressor, High Back, Cloth, With Mechanical Lumbar, for Bus Only
	<u>Includes</u>
	: SEAT BELT, DRIVER Adjustable D-Loop Seat Belt, Single Locking Retractor
48RZJ	STEP TREADS {Koroseal} Pebble Top With White Nosing, With Non-Metal Backing
48SAD	SEAT,PASS,LT,26",2 LEG (01)
48SDU	SEAT,PASS,LT,39",2 LEG (11)
	<u>Notes</u>
	: BTI Seating System Base Seat. Retrofittable, Contact IC Bus Application Engineering for more information.
48SKN	SEAT,PASS,RT,39",2 LEG (12)
	<u>Notes</u>
	: BTI Seating System Base Seat. Retrofittable, Contact IC Bus Application Engineering for more information.
48USV	SEAT BACK, PASSENGER High Back
48VKS	SEAT BELT, DUAL Non-Retractable, Maroon/Brown, 01 Seat
48VRA	SEAT BELT, TRIPLE Non-Retractable, Maroon/Blue/Brown, 23 Sets
49087	BODY PLAN, APPROVED VARIATION Number 087
49ABA	LIGHTS, BACK UP (2) 4" Diameter, Clear
49ACD	LIGHTS, DIRECTIONAL, FRONT 7" Amber Arrow, on Front Cowl
49ACU	LIGHTS, DIRECTIONAL, REAR (2) 7" Amber, Without Arrow
49ADA	LIGHTS, DIRECTIONAL, SIDE (2) {Weldon} Armor Type, Amber, One Each Side First Section Behind Entrance Door
49ADC	LIGHTS, WARNING (8) Quartz Halogen Beams, 7", 2 Front, 2 Rear, Red and Amber Lights
49ADX	LIGHTS, TAIL, LICENSE PLATE (2) 4" Red With Light Window
49AEK	LIGHTS, MARKER, FRONT, REAR (4) Two Amber Front and Two Red Rear, Armor Type Single 1500 Hour 2cp Bulb Each Light
49AEU	LIGHTS, STOP (2) and Tail, 7" dia., Red
49AJH	CONNECTION, LIGHTS Cluster, Clearance and Side Marker To Tail Lights
49AMB	WIRE, FEED 4 Gauge, Chassis To Body
	<u>Notes</u>
	: Terminals have heat shrink protection.
49AMD	SWITCH, DRIVER PANEL, TYPE Rocker
49AMT	CIRCUIT, PROTECTION Breakers, Manual Reset in Lieu of Fuses
	<u>Includes</u>
	: ACCESS PANEL for Body and Chassis Fuses/Circuit Breakers Located on Body Exterior; Below Driver Window

Vehicle Specifications  
2018 INTEGRATED CE S BUS (PB105)

December 29, 2016

<u>Code</u>	<u>Description</u>
49AMV	ALARM, BACKING {Ecco #850} 112 db
49AMY	SWITCH, REAR DOOR BUZZER for Emergency Door
49ANH	SWITCH, MAGNETIC, DISCONNECT Master, Ignition Operated, All Body Circuits
49ANU	SOURCE, POWER 12 Volt DC, Mounted On Dash
49APB	LIGHTS, DOME Rectangular Recessed Type; Stagger Mounted in Light Bars  <u>Includes</u> : WIRING HARNESS Main Body Wiring Harness Accessed by Removing Dome Light
49APT	LIGHT, DRIVER Mounted in Wiring Access Panel Left of Driver, Switch Located in Switch Panel
49ARM	SWITCH, DOME LIGHT, REAR Separate, for Rear Row Dome Lights, Last Light on Each Side
49ARN	LIGHT, STEP Wired to Clearance Lights
49ATR	MONITOR, LIGHT SYSTEM 16 Incandescent Indicator Lights
49ATV	LIGHT, INDIC, WARNING LIGHTS Red and Amber  <u>Includes</u> : LIGHTS, WARNING Indicator Located in Instrument Cluster
49AWT	SPEAKERS AND WIRING (4) Flush Mounted in Light Bar
49BCN	FLASHER SYSTEM (8) Warning Lights, 8-Lamp System, Electronic Relay Flasher, Non-Sequential Operation, Red Lights Activate With Door Open
49BCR	LIGHT, EXTERIOR, CHECK Automatically Activates Lights for Pre Trip Inspection
49BEB	LIGHTS, CLUSTER Recessed in Cap; Amber in Front and Red in Rear
49BLM	WIRING, TWO WAY RADIO Power and Ground Connection Only; Connection in Flasher Plate Area with 20 Amp Fuse Protection
49BRE	LIGHTS, MARKER, SIDE Intermediate, Single Bulb, Centered, 3cp, 1500 HR Bulb, Required for Units 30 Foot or Longer
49BYC	RADIO, ENTERTAINMENT {Panasonic} AM/FM/CD Stereo, Includes Antenna and Cable, With Public Address System
49DMT	MIRROR, REAR VIEW, EXTERIOR {Rosco} Open View, Black, Heated, Non-Detent
49EAS	HEATER, ENGINE COOLANT Fuel Fired, Espar, 42,000 BTU, with Exhaust Exit Ahead of Rear Axle
49EEX	STOP ARM, FRONT {Specialty} Electric, 18" Octagon, Double Sided, 1/2" White Border, Hi Intensity, Flashing RED Incandescent Lights
49EGC	MIRROR, INSIDE 6" x 30", Clear Safety Glass, Metal Back, Round Corners
49EGM	MIRROR, CROSS VIEW, EXTERIOR Heated, Black, Rosco  <u>Includes</u> : MIRROR MOUNT Attached to Body with Metal Backing Plates
49ENK	VISOR, INTERIOR, LEFT FRONT 6" x 30", Transparent, For Left Windshield
49EUB	KIT, FIRST AID Metal; 24 Unit, Spec State
49EVL	SWITCH, NOISE SUPPRESSION Actuator Legend States, "NOISE SUPP ", for Separate Solenoid, With Red Switch in Panel
49EWT	LIGHT, STROBE Specialty Man. Co. 515-400, Low Profile, Double Flash, 4.25" High
- 49GAP	KIT, BODY FLUID Montana

**Vehicle Specifications**  
**2018 INTEGRATED CE S BUS (PB105)**

December 29, 2016

<u>Code</u>	<u>Description</u>
49GBV	WINDSHIELD WIPERS (2) Cowl Mounted  <u>Includes</u> : WINDSHIELD WIPERS CONTROL Single Motor, Overlapping Wipe Pattern
49GDA	LATCH, DOOR BULKHEAD Spring Latch, for Bulkhead Mounted Safety Compartment or Destination Sign Access Doors
49GDC	DOOR, FRONT BULKHEAD For Access to Front Bulkhead
49GEM	SAFETY TRIANGLES Warning Reflectors, Mounted on Front of Drivers Barrier 6" Below Top of Modesty Shield
49GGE	FIRE EXTINGUISHER, DRIVER AREA 5 lb 2A-40BC Minimum With Flexible Hose and Metal Nozzle
49GHN	REFLECTORS, REAR (2) 3", Red, Adhesive Back
49GHR	REFLECTORS, SIDE, REAR (2) 3", Red, Adhesive Back
49GHV	REFLECTORS, SIDE, FRONT (2) 3", Amber; Adhesive Back, 1 Aft Drivers Window Left, 1 Aft Entrance Door Right
49GHX	REFLECTORS, SIDE, INTERMEDIATE (2) 3" Amber, 1 Each Side, Below The Third Rub Rail From the Top, Adhesive Back
49GKZ	FUEL FILLER DOOR With Non-Locking Latch
49GUH	CERTIFICATE HOLDER (1) 9.375" x 6"; With Transparent Cover
49GUM	INSPECTION PLATE Fuel Sending Unit 8" x 8" Steel
49GUW	MOISTURE BARRIER, FLOOR Between Plywood and Steel; for AK Body
49GUX	MUD FLAPS, FRONT WHEELS (2) Rubber
49GWS	CHAINS, REAR, AUTOMATIC Wiring Only, Routed With The Brakes Lines
49GWW	WINDSHIELD WASHER Kit; 6 Quart Capacity, Bottle  <u>Includes</u> : WINDSHIELD WASHER ELECTRICAL CONNECTIONS Sealed and Locking Type
49GZX	FUEL FILLER PIPE Neck Cap and Vent Hosing for Use With Right Side Fill 65 Gal. Between the Rails Fuel Tanks
49JAC	DEF FILLER DOOR With Non-Locking Latch
- 49MSZ	EXTRA WIRING Power Connection in Electrical Panel; Four Positions Fused at 20 Amps Each; (2) Battery and (2) Accessory
49NAA	TIMER, FUEL FIRED HEATER {Multi Max F1000} Digital, for Espar Fuel Fired Heater
49SAA	SWITCH, INSTRUMENT PANEL LIGHTS; Rheostat
49TBN	BODY PLAN, NON-SPECIAL NEEDS Conventional; 33' 5" Body Length, +9 Section Front & Rear, 71 Passenger, 276" WB, DX0010A000
49UBE	STATE OF OPERATION Montana
7382135415	(2) TIRE, FRONT 11R22.5 Load Range H HSR2 (CONTINENTAL), 498 rev/mile, 75 MPH, All-Position
7382135423	(4) TIRE, REAR 11R22.5 Load Range H HDR2 (CONTINENTAL), 491 rev/mile, 75 MPH, Drive
	<b>Services Section:</b>
40114	WARRANTY Standard for CE, RE, BE School Bus Models, Effective with Vehicles Built January 2, 2015 or Later, CTS-3304G



Vehicle Specifications  
2018 INTEGRATED CE S BUS (PB105)

December 29, 2016

<u>Code</u>	<u>Description</u>
40KMB	SERVICES, TOWING (Navistar) Service Call to 36-Month/Unlimited Mileage to the Nearest Navistar Dealer for Navistar Warrantable Failure as Contract Defined; Includes Engine Failure if Supplier Declines Tow Coverage & ESC Supplied thru Navistar; \$550 (USA) Maximum Benefit per Incident
49GVN	WARRANTY 5-Year, Limited

**Financial Summary**  
**2018 INTEGRATED CE S BUS (PB105)**

December 29, 2016

<u>Description</u>	<u>(US DOLLAR)</u>	<u>Price</u>
Factory List Prices:		
Product Items	\$182,068.00	
Service Items	\$550.00	
Total Factory List Price Including Options:		\$182,618.00
REI HD420 DVR w/3 Cam, 500GB HDD, 2 interior cameras and 1 exterior stop arm camera with overview camera - installed by Mobile Fleet for REI	\$2,500.00	
On Spot Chains includes air compressor installed - 704734-161104-01	\$3,620.00	
Total Preparation And Delivery:		\$6,120.00
Freight Charge	\$3,000.00	
Total Freight:		\$3,000.00
Total Factory List Price Including Freight:		\$191,738.00
Less Customer Allowance:		(\$95,602.53)
Total Vehicle Price:		\$96,135.47
Total Sale Price:		\$96,135.47
Total Per Vehicle Sales Price:		\$96,135.47
Less Trade-In Allowance:		(\$30,000.00)
Net Sales Price:		\$66,135.47

Please feel free to contact me regarding these specifications should your interests or needs change. I am confident you will be pleased with the quality and service of an IC Corporation vehicle.

Approved by Seller:

Accepted by Purchaser:

\_\_\_\_\_  
Official Title and Date

\_\_\_\_\_  
Firm or Business Name

\_\_\_\_\_  
Authorized Signature

\_\_\_\_\_  
Authorized Signature and Date

This proposal is not binding upon the seller without  
Seller's Authorized Signature

\_\_\_\_\_  
Official Title and Date

The TOPS FET calculation is an estimate for reference purposes only. The seller or retailer is responsible for calculating and reporting/paying appropriate FET to the IRS.



\$ 95,800 delivered

Blue Bird Body Company - Sales Quotation

Quote 143484 - GALLATIN GATEWAY SCHOOLS

Market	PLBT	Prod Code	Length	Capacity	Chassis	Wheelbase	Qty	Promise Date
US School Bus	BBCV	RG	3303	71	BB-BBCV	273.0	1	03/15/2017

Quoted To: GALLATIN GATEWAY SCHOOLS  
 GALLATIN County  
 100 MILL STREET  
 GALLATIN GATEWAY MT 59730

Quoted By: Hartleys School Buses

P O Numbers: 2017

Quantity	Base Model / Feature	Description	Price	Markup Price
1	BBCV 3303	B.B. CONVENTIONAL	\$66,405.00	\$66,405.00
Quote Id: 143484		Standard Options		
1	0019802	LATCH, LOCKING, DOOR BATTERY CMPT	0.00	0.00
1	0025400	STEPWELL, NATL STDS, 1990	0.00	0.00
1	0037401	RETAINER REAR EMERG DOOR	0.00	0.00
1	0098400	PLYWOOD FLOOR SCREWED DOWN	0.00	0.00
1	0102601	WEAR PLATE, ENT DR, RUBBER, WHITE NOSE	0.00	0.00
1	0156100	EMERGENCY DOOR ARROWS	0.00	0.00
1	0192202	DAYTIME RUN LGTS, W/ P/BRAKE DEACTIVATE	0.00	0.00
1	0223000	DOOR SWITCH, STEPWELL LIGHT	0.00	0.00
1	0232400	EXTERIOR SOLID NSBY	0.00	0.00
1	0232513	LOGO, BIRD, PAINTED, BLACK	0.00	0.00
1	0244911	GALVALUME I/S PNL, FULL HEM, TEXTURIZED	0.00	0.00
1	0318301	VISOR, ACRYLIC, LEFT SIDE, ADJUSTABLE	0.00	0.00
1	0674500	COVER FOR EMERGENCY DOOR SWITCH	0.00	0.00
1	3000100	ACCESSORY POWER SOCKET W/CAP	0.00	0.00
1	3010215	LIGHTS, CL/MK, LED, 2 AMBER, 2 RED	0.00	0.00
1	3010310	LIGHTS, ID, GROMMET MOUNT, LED	0.00	0.00
1	3010510	LIGHTS, MKR, LED, INTERMEDIATE	0.00	0.00
1	3010901	PRE-TRIP EXTERIOR LIGHT TEST	0.00	0.00
1	3015101	LIGHTS, DOME, 15 CANDLEPOWER	0.00	0.00
1	3019305	FLASHER, W/L SYSTEM, I-O CONTROLS	0.00	0.00
1	3019602	HOODS, WARNING LIGHTS, DUAL	0.00	0.00
1	3019901	SYSTEM, WARN, 8-LGT, SEQ	0.00	0.00
1	3020101	SEQUENCE, W/L SYSTEM, SEQUENTIAL	0.00	0.00
1	3021001	SWITCH, W/L MASTER, LOC, LH	0.00	0.00
1	3021003	SWITCH, W/L START, LOC, LH	0.00	0.00
1	3021009	LIGHTS, PILOT, W/L SYSTEM, LOC, LH	0.00	0.00
1	3021103	CONTROLS, CONFIG, W/L, OPT #3, 8-LGT, LH	0.00	0.00
1	3021802	SWITCH, W/L, MASTER, GREEN PILOT	0.00	0.00
1	3022501	SWITCH, W/L START, MANUAL	0.00	0.00
1	3022802	INDICATOR, W/L SYSTEM, AMBER/RED	0.00	0.00
1	3029505	LOCATION, STOP ARM, FRONT	0.00	0.00
1	3029711	WIRING, S/ARM, ELECT W/INDEP FLSHR	0.00	0.00
1	3031601	WIRING, W/L SYSTEM, 14 GA	0.00	0.00
1	3032101	LIGHT SWITCH PANEL, CHASSIS CTRL	0.00	0.00
1	3033101	CIRCUIT PROTECTION, FUSES	0.00	0.00
1	3038601	PAINT, CHASSIS, GRILLE, YELLOW, BBCV	0.00	0.00
1	3040001	PAINT, INTERIOR, ASTRO WHITE	0.00	0.00
1	3043002	VINYL, REFL, RR EMER DR YELLOW, 3M	0.00	0.00

1	3048411	MIRROR BRACKETS, C/VIEW, BELL MOUNT	0.00	0.00
1	3048415	MIRROR, CROSSVIEW, EYE-MAX LP	0.00	0.00
1	3052902	3" REFLECT, FRONT, INT & REAR, 3M DIA GRADE	0.00	0.00
24	3083405	PAD, CUSHION, SEAT, REBOND	0.00	0.00
1	3092102	LATCH, LOCKABLE, ACCESS DOOR	0.00	0.00
1	3094511	BODY CONSTRUCTION FM/CMVSS 221	0.00	0.00
1	3096006	STEPWELL, GALVANIZED	0.00	0.00
1	3097702	DOOR, ENTRANCE, OUTWARD OPENING	0.00	0.00
1	3101502	DOOR, EMERGENCY, REAR, 2 WINDOW	0.00	0.00
1	3102402	TRIM, AISLE, ALUMINUM	0.00	0.00
1	3104901	HANDRAIL, ENT DR, BARRIER 3.25 - 5.25	0.00	0.00
1	3115601	LIGHT, STEPWELL, 15 CANDLE POWER	0.00	0.00
1	3116020	STEPTREADS, ENT DR, N/ABR, WHITE NOSING	0.00	0.00
1	3116601	MARKER LGT CONTROL, STEPWELL LGT	0.00	0.00
1	3118401	GLASS, RR EMER DR, LWR, CLR, TEMP	0.00	0.00
1	3118501	GLASS, RR EMER DR, UPR, CLR, TEMP	0.00	0.00
1	3120103	BUZZER, REAR EMERG DOOR	0.00	0.00
1	4000012	AXLE, STEER, HENDRICKSON NXT, 12000 LB	0.00	0.00
1	4000416	SUSPENSION, SPRG, FRT, SOFTEK, 8500	0.00	0.00
1	4000512	SUSPENSION, SPRG, REAR, 2-STAGE, 21000	0.00	0.00
1	4001852	AXLE, REAR, 21K LBS, 5.29	0.00	0.00
1	4007105	BRAKES, HYDRAULIC, MERITOR, 70MM 4 POD	0.00	0.00
1	4007603	BRAKES, ANTI-LOCK (ABS), HYD	0.00	0.00
1	4008604	BUMPER, REAR, STEEL	0.00	0.00
1	4008806	BUMPER, FRONT, STEEL 15IN	0.00	0.00
1	4009704	COLUMN, STEER, TILT/TELESCOPE, DOUG AUTOTEC	0.00	0.00
1	4009801	CRUISE CONTROL	0.00	0.00
1	4010806	HOSE, COOL, RUBBER, PREM, W/CONST TENS CLMP	0.00	0.00
1	4011102	FLUID, TRANSMISSION, SYNTHETIC	0.00	0.00
1	4011111	ANTIFREEZE, ES COMPLEAT, CUMMINS (BLUE)	0.00	0.00
1	4013407	ALTERNATOR, LEECE-NEVILLE, 240 AMP, AVI 160	0.00	0.00
1	4014206	BATTERIES, GROUP 31, THREE	0.00	0.00
1	4017109	GOVERNOR, ROAD SPEED, 75 MPH	0.00	0.00
1	4021603	TALLPIPE, SIDE EXIT, LH	0.00	0.00
1	4023317	FILTER, DIESEL, W/F, HEATED, PRIMER PUMP	0.00	0.00
1	4024101	FUEL SYSTEM, DSL, 60 GAL BFR RH FILL	0.00	0.00
1	4028004	GAUGE, SPEEDOMETER, MILES	0.00	0.00
1	4039014	BALANCE FRONT WHEELS	0.00	0.00
1	4043214	TRANS, ALLISON, 2500PTS 5 SPD	0.00	0.00
1	4044004	WHEELS, STEEL, 8.25X22.5 DSC, HUB-PILO	0.00	0.00

Quote Id: 143484		Optional Features		
1	0016100	EMERGENCY EQUIPMENT CMPT,UPR FRONT	170.00	170.00
1	0021901	SLIDING BOLT VANDAL LOCK - RCED	190.00	190.00
1	0028800	FORWARD GRABRAIL	31.00	31.00
1	0050505	FUEL TANK DOOR,SPRING-LOADED,LOCKING	20.00	20.00
1	0057500	FLAPS FRONT RUBBER	51.00	51.00
1	0058600	FLAPS REAR WITH BB LOGO	60.00	60.00
1	0059100	REAR MUDFLAP EXTENSION	15.00	15.00
1	0060000	FENDERS REAR RUBBER	135.00	135.00
1	0066101	FE 5 LB DRY W/HOSE (DRIVERS CPT)	60.00	60.00
1	0066105	FE 5 LB DRY W/HOSE (EMER EQUIP CPT)	60.00	60.00
1	0075400	TRIANGULAR WARNING DEVICE FLOOR	34.00	34.00
1	0098611	FLOOR, PLYWOOD, 5/8" TREATED	375.00	375.00
1	0135002	ENT STEP DE-ICER LOWER & SECOND	330.00	330.00
1	0148505	INSULATION, BOW CAVITY, FIBERGLASS	57.00	57.00
1	0150203	INSULATED DRIVERS AREA, FIREWALL	84.00	84.00
1	0150600	SOUND DEADENING SPRAY COAT 1/16 THK	53.00	53.00
1	0150702	ACOUSTIC HEADLINING FULL LENGTH	595.00	595.00
1	0233001	PAINT DESIGN, WHITE ROOF, 12.5 IN	240.00	240.00
1	0268300	EXTEND SEAT RAIL	62.00	62.00
21	0279309	SEAT, 39, SIMT LD, SEAT BELT READY, HBK	4410.00	4410.00
2	0279314	SEAT, 39, REAR, SIMT LD, SEAT BELT READY, HBK	290.00	290.00
1	0279315	SEAT, 2/3, SIMT LD, SEAT BELT READY, HBK	145.00	145.00
1	0283611	SEAT BELT, DRV 3PT, SINGLE, RETRACT, ORANGE	0.00	0.00
1	0298011	SHOULDER PADS	175.00	175.00
1	0311000	GRIP HANDLES	38.00	38.00
1	0311001	STEP, COWL, FOLDING	14.00	14.00
1	0311805	INSULATION, STEPWELL, NR 3	460.00	460.00
1	0318310	VISOR, ACRYLIC, DRS WDC, ADJUST, DARK	38.00	38.00
1	0328700	4 PC FLAT TINTED W/S	0.00	0.00
1	0344200	WIPER BLADES ALL WEATHER, 18IN	15.00	15.00
1	0347011	77 IN HEADROOM CONVENTIONAL	285.00	285.00
24	0695500	1/2IN PLYWOOD BASE 5 PLY CDX	192.00	192.00
1	3002601	FAN, AUXILIARY, UPPER RIGHT, 6"	63.00	63.00
1	3002602	FAN, AUXILIARY, UPPER LEFT, 6"	63.00	63.00
2	3002901	WIRING, VENT, ROOF HATCH, BUZZER	0.00	0.00
2	3003026	VENT, SAFE FLEET, STANDARD	550.00	550.00
1	3005618	HOSE, HTR, EPDM, W/CT CLAMPS	150.00	150.00
1	3005702	SWITCH, NOISE SUPPRESSION, LATCHING	0.00	0.00
1	3005803	PUMP, HEATER WATER	235.00	235.00
1	3006007	HEATER, 50K, FRT STEPWELL AREA	630.00	630.00
1	3006009	HEATER, 50K, LH, FRONT, F/M	295.00	295.00
1	3006011	HEATER, 50K, LH, REAR, F/M	355.00	355.00
1	3006015	HEATER, 50K, RH, FRONT, F/M	400.00	400.00
1	3006017	HEATER, 50K, RH, REAR, F/M	545.00	545.00
1	3011605	LIGHTS, DIRECTIONALS, RR, AMBER LED	28.00	28.00
1	3011721	LIGHTS, DIR/MKR, SIDE, LED, FRT, BELT	75.00	75.00
1	3011723	LIGHTS, DIR/MKR, SIDE, LED, REAR, BELT	75.00	75.00
1	3012005	LGTS, DIR, FRT AMBER, FENDER MNT, LED	87.00	87.00
1	3012103	WIRING, DIR, SIDE, FRONT, BELTLINE	0.00	0.00
J	3012105	WIRING, DIR, SIDE, REAR, BELTLINE	0.00	0.00
1	3015501	LIGHT, 1 DOME, DRIVERS, SEPERATE SW	19.00	19.00
1	3015803	DOME, 2 ROW/2 SWITCHES, F & R, CONFIG	65.00	65.00
1	3017306	LIGHT, 4" LED, STOP/TAIL, VANDAL RESIST	38.00	38.00
1	3017503	LIGHT, 7" STOP/TAIL, LED	27.00	27.00

1	3017607	LIGHT, 4" BACKUP, LED, VANDAL RESIST	67.00	67.00
1	3019512	MONITOR, UNIV., EXTERIOR LT, DORAN	180.00	180.00
1	3020019	LIGHTS, WARN, LED, 8-LGT, AMB/RED	500.00	500.00
1	3021018	SWITCH, DOOR CONTROL, LOC, RH	0.00	0.00
1	3024201	LIGHT, BOARDING, ENTRANCE DOOR	38.00	38.00
1	3024404	LOCATION, STROBE, 18" FROM REAR OF ROOF	0.00	0.00
1	3024603	CONTROL, STROBE, S/CONT, W/PILOT	19.00	19.00
1	3026021	RADIO, AM/FM/USB/MP3 W/PA	435.00	435.00
1	3026906	SPEAKER, DLX, 8 SPKR SYS W/WIRING	130.00	130.00
1	3026911	REMOTE MIC, DRIVER CONTROLLED	0.00	0.00
1	3028502	WIRING, CROSSING ARM, ELECTRIC	0.00	0.00
1	3029217	CROSSING ARM, ELECTRIC, POLYROD	375.00	375.00
1	3029341	STOP ARM, ELEC, LED, HI-IN, CLUSTER	125.00	125.00
1	3031002	HORN, BACKING SAFETY, 112 DB	120.00	120.00
1	3033305	BLUE BIRD CONNECT, PRE-WIRE ONLY	205.00	205.00
1	3033706	INSULATION, ENTRANCE DOOR HEADER	17.00	17.00
1	3033707	INSULATION, BODY, POLYESTER/FIBERGLASS	125.00	125.00
4	3036501	LETTERING, EMERGENCY EXIT, ABOVE EXIT	0.00	0.00
1	3036502	LETTERING, EMERGENCY DOOR, ABOVE EXIT	0.00	0.00
5	3036601	LETTERING, EMERGENCY, INTERIOR, VINYL, BLACK	0.00	0.00
5	3036602	LETTERING, EMERGENCY, EXTERIOR, VINYL, BLACK	0.00	0.00
1	3038505	PAINT, RUBRAILS ONLY, FULL WIDTH BLACK	185.00	185.00
1	3039502	PAINT, BACKGROUND, WARN LGT, 3" BLACK	94.00	94.00
4	3043004	VINYL, REFL, P/O WINDOW YELLOW, 3M	0.00	0.00
1	3043005	VINYL, REFL, SB SIGN, FRT YELLOW, 3M	75.00	75.00
1	3043006	VINYL, REFL, SB SIGN, RR YELLOW, 3M	75.00	75.00
1	3043007	VINYL, REFL, 2IN SIDE YELLOW, 3M	150.00	150.00
1	3043008	VINYL, REFL, 1.75 IN RR YELLOW, 3M	82.00	82.00
1	3043013	VINYL, REFL, 1IN SIDE YELLOW, 3M	150.00	150.00
1	3045604	MIRROR, REARVIEW, INT, 10 X 30	19.00	19.00
1	3048202	HEATED MIRROR, EXT, W/REM CTRL	610.00	610.00
1	3048328	MIRROR, ROSCO, ACCUSTYLE, 8X17, DETENT	120.00	120.00
1	3050001	FAK, MULTI-STATE	67.00	67.00
1	3066201	BODY FLUID KIT, MONTANA	23.00	23.00
1	3075801	CERTIFICATION, 4-WHEEL ALIGNMENT	0.00	0.00
24	3077801	SEAT BELT, PASS, BUCKLE 2" SEAT BIGHT	1200.00	1200.00
1	3078409	PANEL, MODESTY, BARRIER, ENT DOOR	47.00	47.00
1	3078443	PANEL, MODESTY, BARRIER, DRIVER, LH	23.00	23.00
1	3079607	SEAT, DRVR, NATIONAL, AIR, MORD, CHOCO	210.00	210.00
1	3079701	ARMREST, RH, DRIVER, SEAT, NATIONAL	32.00	32.00
1	3081502	CUTTER, SEAT BELT, TIE-TECH	16.00	16.00
1	3082006	BARRIER, 30 INCH HIGH BACK	140.00	140.00
1	3082009	BARRIER, 39 INCH HIGH BACK	160.00	160.00
1	3085723	UPH, FIREBLOCK, SEAT BOTTOME/BACKS	260.00	260.00
24	3085745	UPH, FIRE BLOCK, BROWN, PASS	552.00	552.00
2	3085752	UPH, FIRE BLOCK, BROWN, BARRIER	30.00	30.00
1	3088303	DECAL, BATTERY DISCONNECT SWITCH, RED	0.00	0.00
1	3090503	HOLDER, CUP	42.00	42.00
1	3090505	CONSOLE MOUNT, ARM REST	31.00	31.00
1	3095901	PANELS, SIDE, 20 GA FLUTED, 19 3/4 SKT	130.00	130.00
1	3097809	DOOR CONTROL, ELE PWR, MOM SW, 2-POS	610.00	610.00
1	3098103	LOCK, SECURITY, ENT DOOR	62.00	62.00
1	3102107	COVERING, FLOOR, RUBBER, TAN	0.00	0.00
1	3102811	COVERING, FLOOR, RUBBER	275.00	275.00
1	3118703	GLASS, REAR VISION, DK TINT, TEMP	27.00	27.00
1	3118804	GLASS, ENT DR, LOWER, CLR. TEMP, STORM	120.00	120.00

1	3118904	GLASS, ENT DR, UPPER, CLR, TEMP, STORM	84.00	84.00
1	3119101	SCREEN, WINDOW, REAR EMERG, LOWER	24.00	24.00
4	3119322	WINDOW, S/S, P/O, 12", TEMP, TINT, BLK	240.00	240.00
1	3120042	WDO ASSY, DRV, STORM, GRN TNT, TEMP, BLK	56.00	56.00
1	3120109	BUZZER, MID SEC, P/O WINDOW	0.00	0.00
4	3120110	WIRING, P/O WINDOW, DRS BUZ ONLY	0.00	0.00
20	3120224	WINDOW, S/S, 12", TEMP, TINT, BLK	120.00	120.00
3	3120233	WIN, S/S STORM, 12", TEMP, TINT, BLK	330.00	330.00
1	4000902	SHOCKS, COLD TEMPERATURE	38.00	38.00
1	4004804	LUBRICANT, OIL, SYNTHETIC SAE 80W/140, AXLE	180.00	180.00
1	4005110	BRAKE INTERLOCK, PARKING, HYD BRAKES	150.00	150.00
1	4008119	DRYER, AIR, BENDIX AD-IP	405.00	405.00
1	4014104	BATTERY COMPARTMENT, ROLLER TRAY, CHAS MTD	395.00	395.00
1	4014201	SWITCH, BATTERY DISCONNECT	150.00	150.00
1	4016507	TORQUE MGNT, ISB ENG 40179-21, 23	0.00	0.00
1	4016801	HEATER, ENGINE BLOCK, INTERNAL, 750W	135.00	135.00
1	4017302	COMPRESSOR, AUX, ENG INSTALLED	810.00	810.00
1	4017939	ENGINE, CUM B6.7, DSL, 200HP@520LB-FT	0.00	0.00
1	4021303	2017 EMISSIONS ENGINE	9340.00	9340.00
1	4021518	EXHAUST, PRIMARY, FLEX, SING CAN A/T, CUM	0.00	0.00
1	4035414	TIRE, HANKOOK, 11R22.5, LRG, AH12 FT/Z35A RR	335.00	335.00
1	4039004	BALANCE, REAR WHEELS	53.00	53.00
1	4039005	TIRE CHAIN	2230.00	2230.00
1	4041102	TOW HOOKS, REAR	165.00	165.00
1	4041104	TOW EYES, FRONT	33.00	33.00
1	4049302	FUEL SENSE PLUS, ALLISON TCM PROGRAMMING	145.00	145.00

**Quote Id: 143484 Dealer Options**

1	Oil Pan Heater	heater with y cord	200.00	200.00
1	REI 4 Camera	1 at stop arm, 1 looking forward, 2 insi	3000.00	3000.00

**Quote Id: 143484 Customer Charges**

1		Delivery Price	2500.00	2500.00
1		Local Delivery Cost	500.00	500.00

**Quote Id: 143484 Additional Charges**

1		COMM SURCHARGE	1400.00	1400.00
1		DEALER-PREP-ALLOWANCE	-175.00	-175.00
1		FLOORING-ASSISTANCE	0.00	0.00
1		FX-ADJUSTMENT	0.00	0.00
1		FX-PROGRAM	0.00	0.00
1		PRICING-INCENTIVE	0.00	0.00

**Quote Id: 143484 TOTALS**

Total Base Price		\$66,405.00	\$66,405.00
Total Features Price		\$35,755.00	\$35,755.00
Total Additional Charges		\$1,225.00	\$1,225.00
Discount Amount			
Dealer Net Price			
Total Dealer Features Price		\$3,200.00	\$3,200.00
Total Customer Charges		\$3,000.00	\$3,000.00
Total Price			

PRICE EXPIRATION DATE: 03/14/2017

*\$95,800 Net Delivered*  
*- 28,500 Trade in*  


---

*\$67,300*



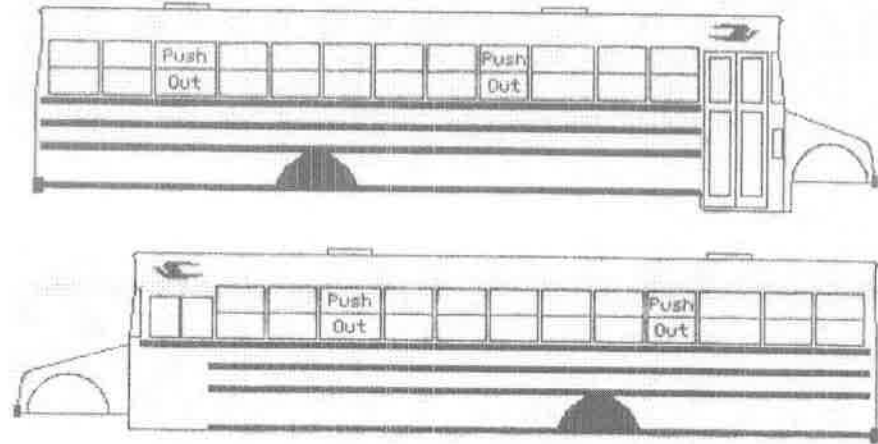
Quote Id: 143484	Additional Feature Information
------------------	--------------------------------

3060001	FAK, MULTI-STATE User Location: emerg. eq comp
3120233	WIN, S/S STORM, 12", TEMP, TINT, BLK User Location: 01LH
3120233	WIN, S/S STORM, 12", TEMP, TINT, BLK User Location: 01RH
3120233	WIN, S/S STORM, 12", TEMP, TINT, BLK User Location: 02RH

Quote Id: 143484

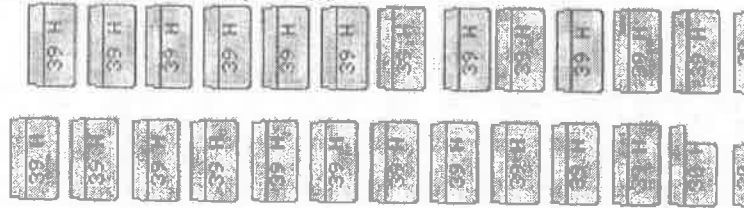
Body Plan / Seat Plan Information

Body Plan: 5011877



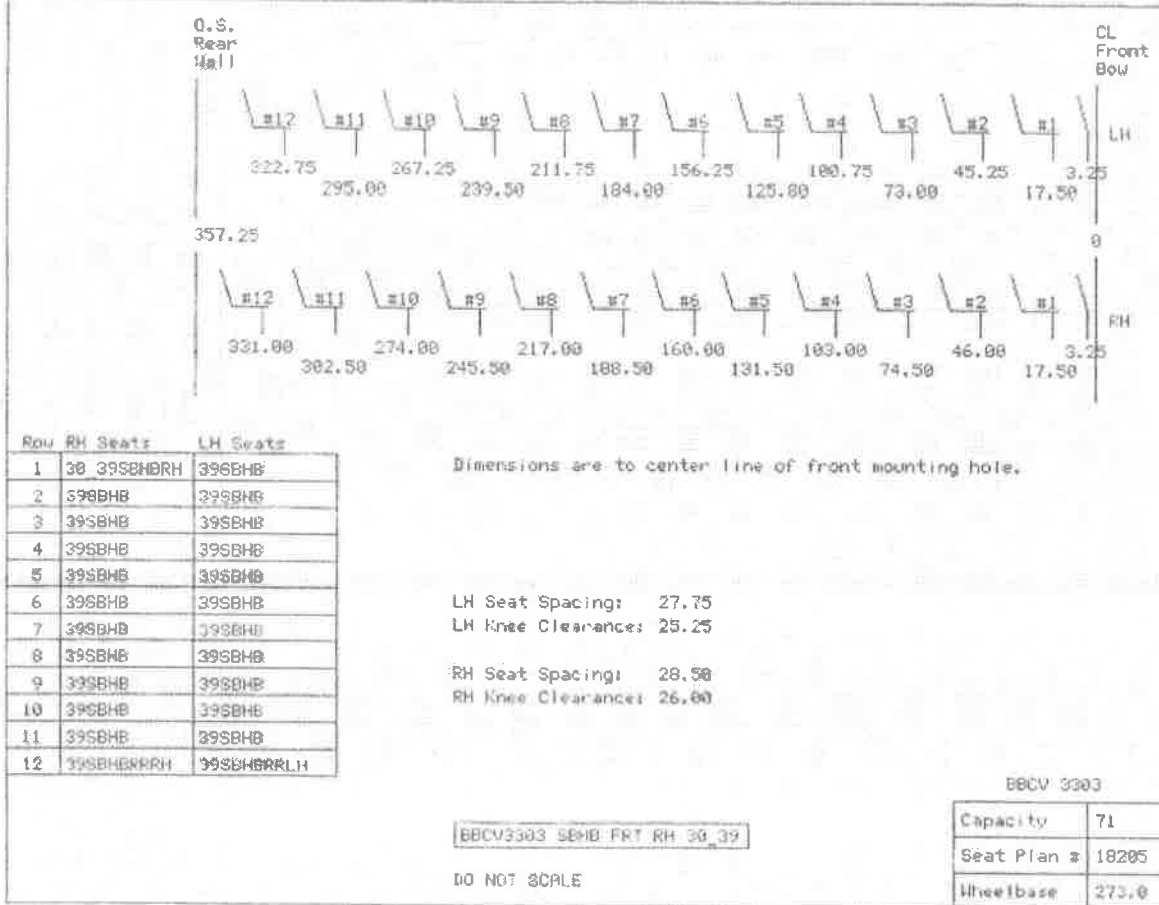
Seat Plan: 18205

SP: 18205 BBCV 3303, 71 CAP



Quote Id: 143484

Seat Plan Spacing Chart



## January 2017 Superintendent's Report:

### Enrollment Summary as of 1/5/2017:

Grade	Total	Boys	Girls	Out of District
K	17	9	8	2
1	14	7	7	4
2	18	10	8	4
3	16	10	6	4
4	22	9	13	5
5	23	13	10	0
6	4	2	2	1
7	14	7	7	1
8	14	9	6	4
<b>Total</b>	<b>142</b>	<b>76</b>	<b>66</b>	<b>25</b>

### Progress on 2016-2017 Gallatin Gateway School District Goals

- I. Gallatin Gateway School Board will demonstrate excellence in governance.**
  - a. Upcoming Training Opportunities:
    - i. MTSBA HR Symposium – February 23 (Livingston)
    - ii. MT-PAC Day of Advocacy – March 13 (Helena)
  
- II. Gallatin Gateway School Board will develop and maintain a safe and secure facility and grounds.**
  - a. There are still difficulties associated with the heaters in the gymnasium. As of 1/12/17, they are working and the heat was at an appropriate temperature for the home basketball game. We have had a technician from Johnson Controls out twice to work on them since the New Year. Additionally, there is only one working at this time.
  
- III. Gallatin Gateway School Board will maintain and provide high quality educational services.**
  - a. All of the teachers associated with the mentoring program continue to meet on a regular basis. Most of the pairs meet on a weekly basis.
  - b. We will be conducting a mentoring meeting on January 26, 2017 to discuss the end of the second quarter and spring needs for new staff.
  
- IV. Gallatin Gateway School Board will promote the development of the whole child.**
  - a. I am working with representatives from McGraw/Hill to complete orders for Corrective Math and Connecting Math Concepts. Teachers and aides have compiled numbers of students and we are ready to complete the order.

- V. **Gallatin Gateway School will develop and implement effectiveness of building trust and communicating within the Gallatin Gateway community.**
- a. I will be conducting the winter parent meeting on Monday, January 30 at 6:00.
  - b. We are in need of host families for two coordinators for the Missoula Children's Theater. They will be here February 26 – March 4. Please let me know if you, or someone you know, would be available to host one of them. I am of the understanding that there is one male and one female traveling with the company that week.
  - c. The GGS staff has agreed to host the February 22, 2017 community supper. I believe that we will be hosting a taco bar.
  - d. Dr. Rob Watson and representatives from BSD7 will conduct a high school expansion meeting on February 22 at 7:00 at the Gallatin Gateway Community Center.
  - e. We received roughly \$400 in anonymous donations prior to the holiday to be used to make Christmas better for some of our families. Ms. Sann and Ms. Clark used that money to purchase gift certificates for the Farmhouse Café, as well as purchase a couple of presents for some students. I am very grateful to all of those who helped make the holidays a little brighter for some of our Gators.

#### Upcoming Events

1. Dodgeball Tournament (Jan 20 @ 5:00)
2. Ski Day (Feb 6)
3. Community Supper (Feb 22 @ 5:00)
4. High School Expansion Meeting (Feb 22 @ 7:00)
5. Missoula Children's Theater (Feb 27 - Mar 4)

#### Additional Information

We have just finished scheduling our 2017 Ski Day for Monday, February 6. I would like to formally thank Scott and Carey Foster for their support, as well as PIE. Without their efforts, this day wouldn't be possible.

On January 12, 2017, I attended the Madison/Gallatin Special Education Cooperative meeting. The main topic of discussion was the 2017-2018 annual budget. Additionally, we discussed the tabling of HB 31 and HB 32, which addressed special education funding. Finally, I learned that Allison Brown (school psychologist) would be moving to Helena over the summer. I offered to serve on the interview committee to find her replacement.

## 2017 Montana Legislative Information

The Montana State Legislature convened their 65<sup>th</sup> session on January 2, 2017. This is a very exciting time and I enjoy following the process, as well as, advocating for bills related to education. As in past sessions, several bills that have a direct impact on education will be discussed during this time and I will do my best to provide regular updates to the board on their progress. I have attached the legislative talking points from the School Administrators of Montana (SAM) and the Montana Counsel of Administrators of Special Education (MCASE) for your review. The Montana Public Education Center (MT-PEC) will be conducting their Day of Advocacy in Helena on Monday, March 13, 2017. The Montana Association of School Superintendents (MASS) will also be conducting their Spring Conference March 13-14 in Helena. These activities will be focused on the Montana Legislature and highlight ways to advocate for various bills related to education.



## MCASE Advocacy Talking Points 2017 Legislative Session



*Montana Constitution, Article X, Section 1: Equality of educational opportunity is guaranteed for each individual.*

*20-9-309 MCA: The legislature shall consider the needs of isolated schools, the needs of students with a disability, the ability of school districts to attract and retain qualified educators and other personnel, and reflects the costs associated with providing for that system including self-executing mechanism for inflationary adjustments.*

*K-12 Vision Group Statement: Ensuring success in recruiting and retaining quality teachers and administrators, and mechanisms to guarantee the state's share of special education is annually adjusted for inflation.*

---

### Talking points for Special Education Funding Proposals – Special Education Inflationary Funding and Special Education Cooperative Funding – Bill Drafts:

**HB 32 (Both Inflation and Coop Funding 2019 Biennium), HB 31 (Inflation 2019 Biennium), HB 33 (Coop Funding 2019 Biennium), LC0166 (Inflation in Formula) and LC0165 (Coop Funding 2019 Biennium)**

- Funding has not met the needs for mandated services (Adequacy Issue).
  - There are growing numbers of students with significant needs including mental health, medical, and autism.
- Students with disabilities must be provided equitable access to services (Equity Issue).
- Schools need the ability to attract qualified personnel.
- Special Education funding has unanimous support of all SAM affiliates through the SAM Delegate Assembly Process– MCASE, MASS, MASSP, MAEMSP, MACSS, META.

### Talking Points for Special Education Inflationary Funding (HB 32, HB 31, LC0166)

- Increases to Special Education Funding have been inconsistent and not proportionate to the increased need for services.
- Funding has not met the needs for mandated services (Adequacy Issue).
- The lack of consistency of adequate special education funding has created a growing discrepancy between special education funding and general education funding. This discrepancy causes reductions to general fund programming in order to meet mandated special education services, thus impacting all students (Equity Issue).

### Talking Points for Special Education Coop Funding (HB 32, HB 33, LC0165)

- Need for adjusting the Special Education Cooperative funding distribution – this formula hasn't been updated since 1992 and ongoing costs have increased significantly through that time. (Adequacy Issue)
- Equitable treatment of rural districts who received special education services for students through Montana's special education coops (Equity Issue).  
(MCA 20-9-309 requires meeting the needs of isolated schools and students with disabilities)

# School Administrators of Montana



Visionary leaders united in providing, advocating, and creating education excellence for Montana students!

---

65<sup>th</sup> Montana Legislature – December 1, 2016

**SAM** was organized as an association of administrators in 1970. It represents the interests, aspirations, and professional leadership of Montana administrators. Nearly 1000 members network under six affiliate associations ([MASS](#), [MAEMSP](#), [MASSP](#), [MCASE](#), [MACSS](#), [META](#)) to promote GREAT Montana Schools, supporting leader's passion for providing an outstanding education to Montana's children!

## SAM Strategic Plan Goal Areas

1. Professionalism, Integrity and Leadership
2. Advocacy
3. Professional Learning and Services

### Professionalism, Integrity and Leadership

- Indicators of outstanding comprehensive education and high performance in Montana's schools.
- Focus attention on the value our public schools bring to each community.
- Setting a shining example of blending the SAM Strategic Plan with advocacy to cultivate a culture of collaboration, alliances and partnerships in the best interest of Montana's children!
- Active participation by SAM members in research and implementation of issues impacting education – [Montana ESSA Consolidated State Plan](#), [HB 374 Suicide Prevention Workgroup](#), Special Ed Coop Funding Task Force, Content Standards Committees, Montana Early Childhood Education, [Chapter 57 flexibility in educator licensure review](#), AdvancED accreditation, and others.
- Cooperating with partners in the development of -- [RISE4MT](#) educator recruitment and retention effort, [MUS Rural Educator Recruitment and Retention Task Force](#), [Montana Educator Performance Appraisal System \(EPAS\)](#), [EducationSuperHighway](#) Broadband Access Initiative, Montana K-12 Connectivity Workgroup, [Montana Farm 2 School](#) Task Force, [Montana Afterschool Alliance](#) Steering Council, Montana Multi-tiered System of Supports (MTSS) Workgroup, Montana CSPD Stakeholder Group.

### Advocacy

- SAM members will be equipped with accurate information and are prepared to advocate for public education.
- Collaboration between education associations (MASBO, MEA-MFT, MQEC, MREA, MTSBA, SAM) formed the Montana Public Education Center ([MT-PEC](#)) creating a positive impact and strong voice on education policy issues.
- Proactive relationships with the Governor's office, State Superintendent and OPI, Montana University System, Montana Legislators, Congressional Delegation, and a wide range of education stakeholders.
- Working closely with the K-12 Vision Group and MT-PEC to establish areas of focus for the 2017 legislative session and education advocacy issues.

(over)



## Advocacy (continued)

- [SAM Delegate Assembly](#) has developed a long range understanding of Positions and Resolutions creating an action plan for advocacy at the state and federal level (DA Steering Committee process). Delegate Assembly met on June 16-17, 2016 creating advocacy recommendations. SAM membership approved the SAM advocacy package at the SAM Business Meeting on October 20, 2016. [SAM Legislative Network](#) will be activated following the November 8 election to implement advocacy.
- [SAM Advocacy Priorities, Positions and Resolutions Approved 10-20-16](#) by the SAM membership:
  - Support Recruitment and Retention of Quality Educators (Recruiting Incredible School Educators [Rise4Montana](#)). Emphasis on public school health insurance costs
  - Oppose Privatization with Public Funds
  - Support [Special Education Funding Adequacy and Equity](#)
  - Support Capital Facilities/Technology Infrastructure Needs
- SAM members' leadership and participation in the development of the [MT ESSA Consolidated State Plan](#) for implementation of the Every Students Succeeds Act (ESSA) is a high priority - 18 of the 38 [stakeholders](#) are SAM members. Stakeholder meetings – May 25-26, September 26, October 24, and November 10. Currently promoting public [comment](#) on the [Draft Plan](#) prior to December 23.
- SAM is working closely with partners in the education community on challenges in the implementation of the SB 410 Tuition Tax Credit bill (2015 legislative session) in association with the MQEC.
- [School Funding Interim Commission \(SFIC\)](#) – Communicated with Commission members offering support for accomplishing their charge. Met on September 23, 2015 adopting a work plan that included the SAM and MT-PEC priorities. Meetings held on January 11-13, April 4-5, May 3-5, and June 13 continued focus on 1) Recruitment/Retention, 2) District Structure & Equity, 3) Facilities, and 4) Special Ed Funding. Final meeting on August 29 approved a [final report](#) which SAM and MT-PEC acknowledged but indicated that the report falls short of adequacy and equity to develop the full potential of every child through the basic system of elementary and secondary schools.
- [Federal advocacy](#) for the implementation of ESSA, support of the increased funding of IDEA, led the charge with Montana's congressional delegation and national associations to request USED address the burden created in completing the Civil Rights Data Collection (CRDC) biannual report, E-Rate and Broadband access for schools, and the REST Act and NEST Act rural educator recruitment legislation.

## Professional Learning and Services

- Professional learning opportunities for educational leaders aligned with best practices research and innovative strategies.
- SAM 21<sup>st</sup> Century Leadership Institute and Mentor Programs are aligned to form the [SAM Leaders Professional Learning Program \(LPLP\)](#), expanding professional learning opportunities for 54 Montana administrators. Review progress at [SAM LPLP 2015-16 Executive Summary](#).
- [#SAMedchat](#) – weekly Twitter chat group on Thursdays, 7-8 pm. Please feel free to join in!
- [SAM website](#) - a one stop repository for member resources. Social media resources.
- SAM annually assists in the operation of 13 conferences creating learning opportunities for our members. See the [Conferences](#) tab on the website.
- SAM implementing new association management software, upgrading website and tools for members.
- Member benefits: Affiliate regional meetings, SAM Bulletin and weekly SAM Updates, colleague networks, state and federal advocacy networks, legal assistance, professional liability insurance, technology embedded solutions including website, cloud-based solutions, use of social media to communicate effectively, many more...
- [MCEL 2016 –GREAT III](#) publication was followed by [GREAT IV](#) (see the video by clicking [HERE](#)) with many learning opportunities for all education leaders at MCEL on October 19-21, 2016.
- [SAM Administrators Institute](#) provided great learning opportunities our entire membership – theme for [SAM AI 2016](#) was “Leadership of Transformation Change for the Whole Child”!
- [SAM 2015-16 Membership Report](#) was 987, a record. Great work affiliate leaders! [SAM 2016-17 Membership Report as of 11/21/16](#) shows 999 members so far, a new record!

To Whom It May Concern:

My name is Shannon Black. I would love for you to consider allowing my son Uriah Black to wrestle with the Gallatin Gateway Gators. We live at 448 Black Company Road on our Ranch in Gallatin Gateway. He attends Petra Classical Christian Academy as a kindergartener; he is 6 ½ years old. My husband Bayard Black was a Gateway Gator wrestler through 8<sup>th</sup> grade; he then went on to wrestle for BHS. Bayard would love to volunteer as well. Uriah wrestled with the Mankato Minnesota wrestling club last year before we relocated back to our home here in Gallatin Gateway. Uriah is excited to wrestle again!

Thank you for this consideration!

---

Sincerely,

Shannon Black

A handwritten signature in black ink, appearing to read 'Shannon Black', written in a cursive style.

1/12/17

# GALLATIN GATEWAY SCHOOL DISTRICT

## Liability Release Form: Non-enrolled Athlete

It is the procedure of the Gallatin Gateway School District to require a signed liability release form before allowing any unenrolled students to participate in a school sponsored activity on or off school property.

I understand that the school and the staff will take reasonable measures to prevent accidents. However, I fully understand that some activities involve inherent risks regardless of reasonable safety measures that may be taken by the district. In consideration of the district's agreement to allow my child to participate in extra-curricular activities, I agree to accept responsibility for any loss or injury to my child that occurs during his/her participation that is not the result of fraud, willful injury or the willful or negligent violation of a law by a trustee, employee or agent of the Gallatin Gateway School District.

In the event it becomes necessary for the district staff in charge to obtain emergency care, neither he\she, nor the school district, assumes financial liability for expenses incurred because of an accident, injury, illness and\or unforeseen circumstances.

Student's Name: Uriah Lawrence Black      Date 1/11/17 \_\_\_\_\_  
(Please Print)

Parent Signature: Shannon Black



Address: 448 Black Company Road Gallatin Gateway Montana 59730

Phone Number: 507-351-1734  
\_\_\_\_\_

Acceptance is conditional on an athlete letter as stated in Athletic Handbook, participation numbers, discipline concerns, completion of the Athletic Handbook, insurance coverage, physical examination for sports cleared without restriction, and any additional information needed by the Athletic Director or Boosters Club of GGS.

I, Shannon Black would like consideration for participation in the following GGS Sports for Uriah Black

\_\_\_\_\_ Volleyball

\_\_\_\_\_ Girls' Basketball

\_\_\_\_\_ Cheerleading

X Wrestling

\_\_\_\_\_ Boys' Basketball

\_\_\_\_\_ Track and Field

Office Use Only:

Board meeting approval date \_\_\_\_\_ Student letter attached: Yes \_\_\_\_\_ No \_\_\_\_\_

# MERIDIAN LAND SURVEYING, INC.



December 22, 2016

Gallatin Gateway School  
Attn: Mr. Travis Anderson, Superintendent  
PO Box 265  
Gallatin Gateway, MT 59730

**RE: Request for Written Response for the Proposed Gravel Hollow Minor Subdivision**

Dear Mr. Anderson:

Attached to this letter you will find a copy of a Sketch Plan and Vicinity Map depicting the proposed Gravel Hollow Minor Subdivision located on the East side of Highway 191, 1.2 miles North of the Community of Gallatin Gateway. The site is located at the intersection of Highway 191 and Gravel Hollow Drive. The minor subdivision is being proposed on Tract A2-1-A-1 of The Fourth Amended Plat of Lot 1 of Peakview Subdivision Unit No. 3, located in the Northeast Quarter of Section 2, T3S, R4E, P.M.M.

The site currently has 16 existing dwelling units (rental units) on a single lot. It is proposed that the site will be turned into a condominium, utilizing each individual structure as an individual unit. In addition, it is proposed that 2 more units will be built on the property, bringing the total number of condominium units to 18.

Please reply in writing with any comments regarding the proposed Gravel Hollow Minor Subdivision by January 20<sup>th</sup>, 2017. Your response letter will be included with the subdivision preliminary plat application.

You may contact me by phone at (406) 579-1746 or by email at [meridiansurveying@yahoo.com](mailto:meridiansurveying@yahoo.com) with any questions.

Sincerely,

A handwritten signature in black ink, appearing to read 'Michael S. Lapp'.

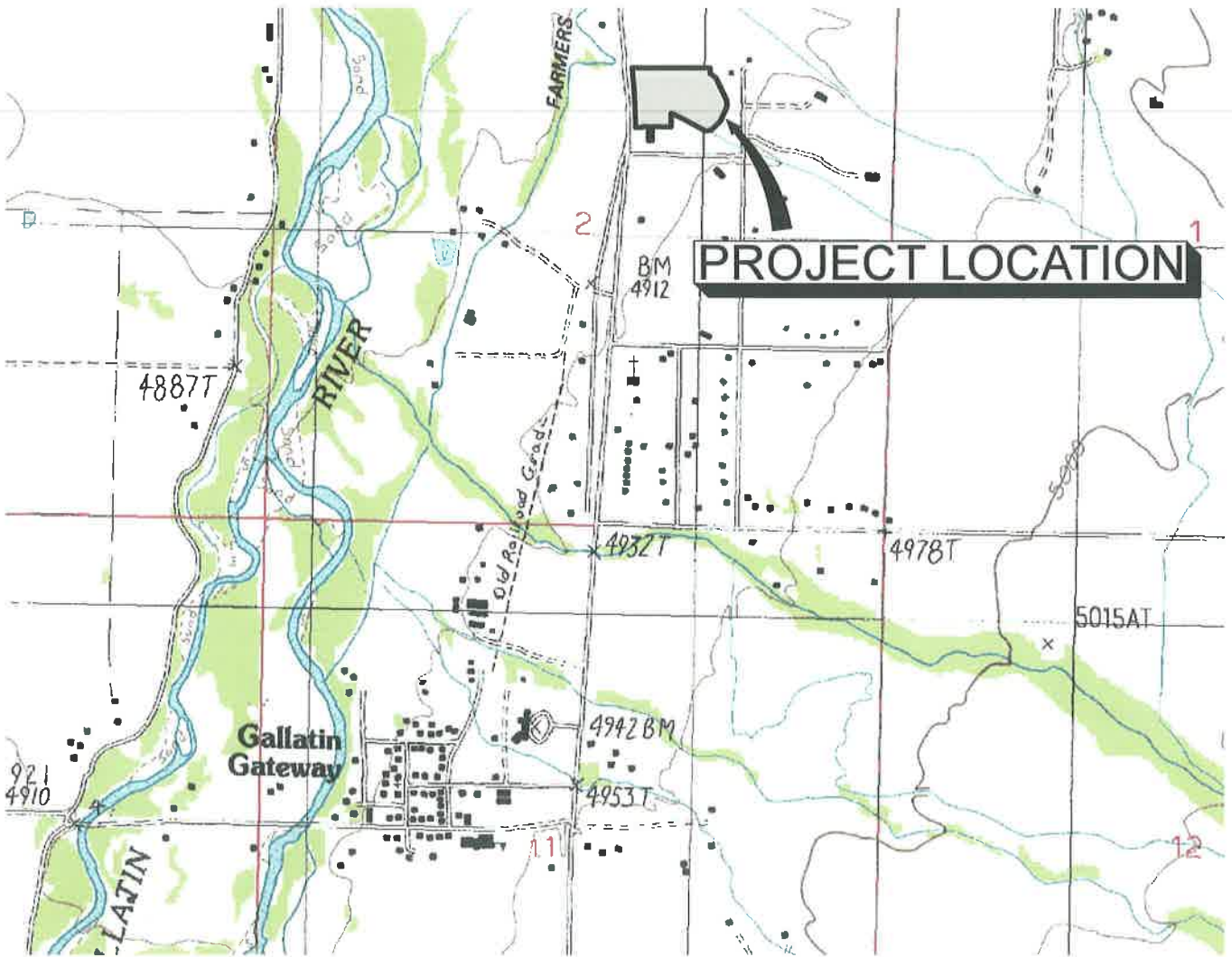
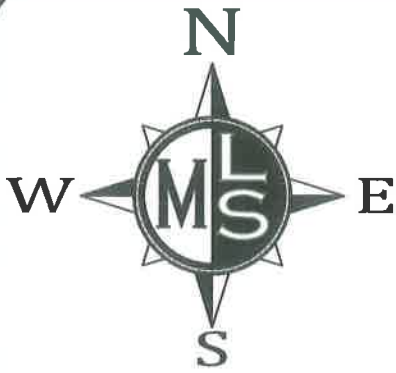
Michael S. Lapp, PLS  
Meridian Land Surveying, Inc.

encl.

---

*Meridian Land Surveying, Inc. - Specializing in Service to our Clients*

64 BRECKEN COURT, BOZEMAN MONTANA, 59718  
PH. 406-579-1746 [MERIDIANSURVEYING@YAHOO.COM](mailto:MERIDIANSURVEYING@YAHOO.COM)



GRAVEL HOLLOW SUBDIVISION  
VICINITY MAP

0' 1500' 3000' 4500'



PROJECT NUMBER MT-030-041-02-178.03-16
DATE 10/07/16
SCALE 1" = 1500'
SHEET 1 OF 1

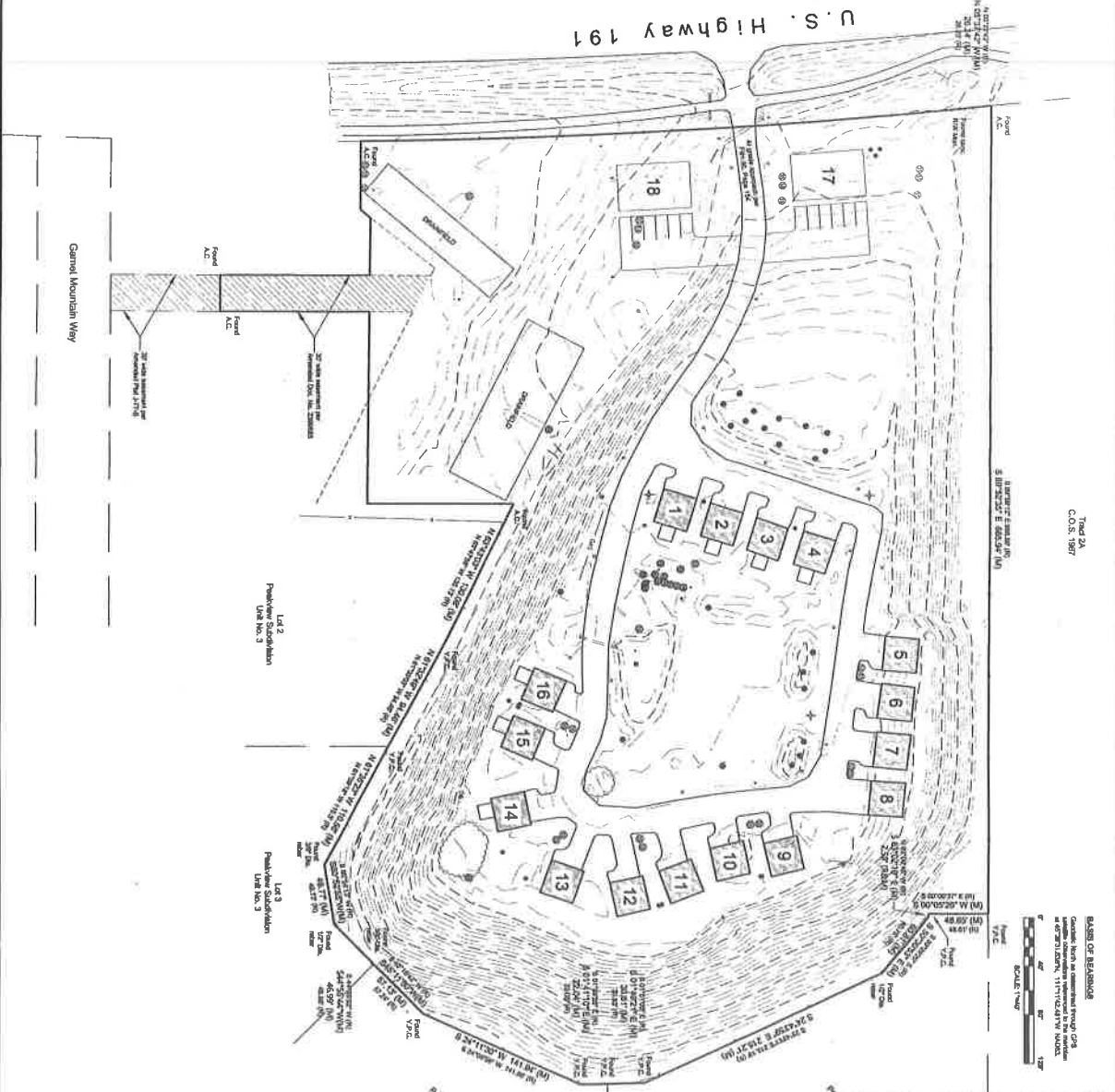
**MERIDIAN LAND  
SURVEYING, INC.**

64 BRECKEN CT, BOZEMAN, MONTANA 59718  
Phone (406) 579 - 1746  
e-mail: [meridiansurveying@yahoo.com](mailto:meridiansurveying@yahoo.com)

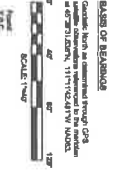




U.S. Highway 191



Tract 2A  
C.O.S. 1987



BLANK OF RECORD  
Created with a computer from a  
drawing of 100% scale, 111710481 W. MOUNTAIN  
C.O.S. 1987



**SUBJECT COMMISSIONED BY**  
Meridian Land Surveying, Inc.  
1007 Northern, Bozeman, Montana, 59718

**LAND OWNERS**  
Meridian Land LLC

**REASON FOR SURVEY**  
General subdivision of property into 18 lots for residential development.

**SEWER AND WATER SERVICE**  
Sewer service provided by a local sewer district. Water service provided by a local water utility.

**ACCESS**  
The proposed subdivision is accessible to the public via U.S. Highway 191 and Garrett Mountain Way.

**PLANNING**  
This subdivision is planned for residential use.

**UNIT BREAKDOWN**  
This subdivision consists of 18 lots, each approximately 1.5 acres in size.

**SCALE**  
1" = 40'

**DATE**  
11/11/2011

**BY**  
Meridian Land Surveying, Inc.

**PROJECT NUMBER**  
111710481 W. MOUNTAIN

**SHEET 1 OF 1**

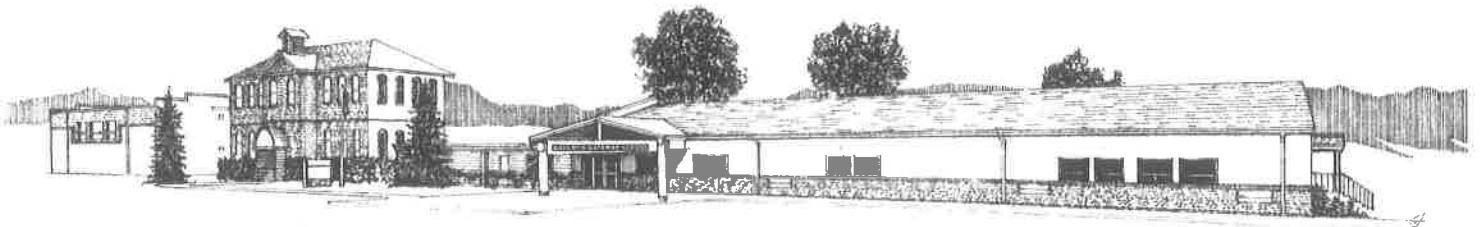
### PRELIMINARY PLAT OF GRAVEL HOLLOW SUBDIVISION

BEING LOCATED IN THE NORTHEAST QUARTER OF SECTION 3, TOWNSHIP 2 SOUTH, RANGE 4 EAST,  
PUEBLO, GALLATIN COUNTY MONTANA.

### MERIDIAN LAND SURVEYING, INC.

64 BRECKEN COURT, BOZEMAN, MONTANA 59718  
Phone (406) 578-1746  
e-mail: meridianurveying@yahoo.com





# GALLATIN GATEWAY SCHOOL

SCHOOL DISTRICT #35 • P.O. BOX 265 • GALLATIN GATEWAY, MONTANA 59730 • 763-4415

January 16, 2017

Meridian Land Surveying, Inc.  
Attn: Michael S. Lapp, PLS  
64 Brecken Court  
Bozeman, MT 59718

**RE: Request for Written Response for the Proposed Gravel Hollow Minor Subdivision**

Dear Mr. Lapp:

The consensus of the Gallatin Gateway School Board is that the Gravel Hollow Minor Subdivision would have little impact on School District #35.

The Board recommends that the developer review the Gallatin Gateway Community Plan available with the Gallatin County Planning Department.

The Board has no objections to the approval of this minor subdivision at this time based on the preliminary plat dated December 22, 2016.

Sincerely,

A handwritten signature in black ink, appearing to read "Travis Anderson". The signature is stylized with a large loop at the end.

Travis Anderson, Superintendent  
Gallatin Gateway School District #35



Carrie Fisher <fisher@gallatingatewayschool.com>

---

## Request for Written Response- Gravel Hollow Minor Subdivision

---

Carrie Fisher <fisher@gallatingatewayschool.com>

Wed, Jan 18, 2017 at 10:35 AM

To: meridiansurveying@yahoo.com

Cc: Aaron Schwieterman <schwieterman@gallatingatewayschool.com>, Christie Francis <francis@gallatingatewayschool.com>, Donna Shockley <shockley@gallatingatewayschool.com>, Julie Fleury <fleury@gallatingatewayschool.com>, Lyn Morton <morton@gallatingatewayschool.com>, Travis Anderson <anderson@gallatingatewayschool.com>

Good Morning Mr. Lapp,

Please find a letter attached to this email from our Superintendent regarding your minor subdivision proposal sent to the District on December 22, 2016.

Thank you and have a wonderful day,

**Carrie Fisher**

District Clerk

Gallatin Gateway School

PO Box 265

Gallatin Gateway, MT 59730

406.763.4415-phone

406-.763-4886-fax

www.gallatingatewayschool.com

cc:

1. Travis Anderson, Superintendent
2. School Board Trustees: Aaron Schwieterman, Donna Shockley, Lyn Morton, Christie Francis, and Julie Fleury.
3. Hard copy- via mail (sent 01/18/17)

---

 **0943\_170118111643\_001.pdf**  
310K